

7.12 Ascobolus brassicae ✓ sp globose 11-12 diam

Ascobolus albidus ✓  sp 22-23 x 12

Laszobolus immure to broad ventricose setae  
< 550 x 26-35 with thickish wall < 3

Saccobolus small ± hyaline 250-350 diam

Some hint of yellow, but spores none  
3+3+2 rather than 4+2

S.m. 48-54 x 20 Spores smooth 19 x 8

ellipsoid, rounded ends. Some slightly fleshy  
with colouring, but not heavily vesicular ✓

Chelymenia immure

8.12 Laszobolus immure Laszobolus as above

Laszobolus smaller, basinate, setae not ventricose  
sp 21-22.5 x 13-13.5 Asci 38 wide  
setae < 200 x 15 below

Ascobolus albidus ✓

Chelymenia? setae not highly pigmented. Not rod-like  
Asci mostly uniseriate sp 20.5-26 x 12.5-13  
25 wide. Setae < 400 x 25

Saccharom ✓ 3+3+2 hyaline purple  
 Sm 51 x 16 sp smooth 17-18 x 8 vesicolar  
~~Schizothecium~~ tetrasporum ✓ 4-sp 22-23 x 9.5-10

Ascobus brassicae ✓

Perithecia fimbriata very young - clear later

9.12 Large Leskeles asci cylindrical,  
 15 wide. Spores narrow ellipsoid, uniseriate  
 19-19.5 x 8 Setae < 610 x 35 at base  
 immature  
 macrotrichs / ciliator / riber  
 need to check more spores

13.12 Coprinus stercorarius privata Sch. tetrasporum ✓  
Ascobus albidus ✓ Pip fimbriata ✓

Dematiaceae Stysanus - rough ellipsoid spores  
 8 x 4 (??) 'S life' 220 x 16-18 + lead 90-100.

Pilobolus small hyaline spores Dactomyces nanus? 6 x 3.5-4

23.12 Cop stercorarius ✓ Sch. tetrasporum ✓ Sch. vestitior?  
Psychodid fly hatched 8-sp. poor scale  
 sp. 25-26 x 13 too large?



Lesrobium v. p. de hyaline apotheca

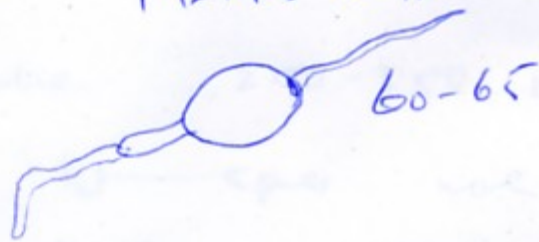
→ Setae verrucose 480 x 35  
no spores yet.

Setae perithecia - central hft, not  
symmetric Saccate asci 480 x 29

250 or 250+ spores. 19-19.5 x 11.5

Pedestal 11-13 x 6

Pedestal



27.12 Asc. albidus ✓

Set. teleomorph ✓

5.1.10 Cap. stromens ✓

Cap. schlosseri w/ cystidia

Setae 250 long acute, hyaline spheroidal

Large hyaline warts distinctively - so Cap. stromens

Setae < 650 long, acute, hyaline x 35 wide.  
walls 4-5 thick near tip

spores long narrow



21-22.5 x 9-9.5

Asci cylindrical 190-200 x 20, sp. uniseriate

Cylindro w/ macrocarpi?

Gomphium

topered spores - asci sp 38-44 x 8

asci 125 x 19

Parallel g slts

Set. teleomorph ✓

Cap. stromens

2.3.10

Discarded