

S20; E164. 09-059. Incubated 19.6.09

016

20.6 - 26.6 Saracia 19-20 x 9.5-11 good gel
abundant. Still mostly immature

Lenticula ✓

16.7 Coprus reddish veil setae + glomeres

Same as 14/09. hyaline capitate setae



Spheromyces < 30 diam
variable in size + colour
measured from old material

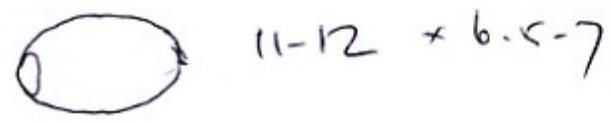
discout see below. Spores ellipsoid 12.5-14.5 x 7.5-8

Sample is in good condition - with inter ad
old Coprus ~~mycelium~~ / curbs? ✓

Sporomella ~~curbs/mirina~~ Spore 1 cell + 2 cells ✓


to give length of 31 x 5

20.7 Coprus U-shaped, to faecal cystidia
spores broad ellipsoid with eccentric g.p.



Curbs

23.7 Selsoe Podospora - not aggregate / fasciculate

poly spored, saccate asci  sp 16 x 9.5 ✓

Curvella

Chalcid pyriform thorax with spirally
coiled setae Spines small, linear form

6.5 x 4.5

basychodes

38 S. f. minor ✓

Disced 3.8