



N17.6371; W63.2516. 160m. Incubated 16 Feb.

20.2.09 Pilobolus spores pale yellowish,
evenly ellipsoid, 6-8 x 3-3.5 ~~Crystallinus~~
roridus ✓


26.2.09 Coprinus v. small reddish-brown
perithecia schles + sphaerocytes. 4-spored
sp ellipsoid   7-9.5 x 4-4.5

P. crystallinus ✓

23.09 Cercophora with whitish hairs around
ostiole. immature signs of apical globose.

Sporomniella minima ✓ spores beak
50-52 x 4.5-5

33.09 Coprinus to fecal cystidia
reddish brown perithecia
sphaerocytes 16-30 diam. schles, some deriving from
sphaerocytes, not from cap/stipe cells, tapering
evenly to tip. 50 < 65-70 long. Cap abode of
reddish cells ca 16-20 diam.

germ pore distinctly excentric 
9.2-11.5 x 4.5-5

keys at best to C. leptomerus but spores too small
Probably same as unnamed form 6 + 7/08

11.3 Cerophora old and pale freshwater
 Perithecium body Semi-immersed to superficial,

with dark prominent neck. Gaster back
 less than as other
 3.5-4.0 $8 \mu m \times 620-440$



$14 \times 6.5-7$

Some larger with short setae at neck.

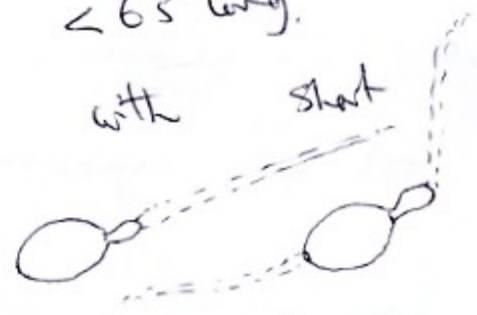
$7.50-5.50 \times 600-825$

= polysporous Ped aspora

net lifted or aggregated, all round.
 < 65 long.

sp $12.5-14.5 \times 9-9.5$

with short



clavate pedicel $6-7 \times 3$,
 almost 'capitate'

long single 2/ apperages ca 50 long - basal.

apical smaller, less distinct

curvicolle

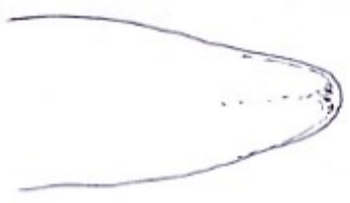
Asci apex
 imbricate - no spore initials



Asci Saccate. 450×150
 with colored spores
 long spores not clavate,

as in illustration

of P. canescens. filling ascus
 central space > 128
 possibly 256?



17.3 Cop. lanabli primordium

Small pure white Coprius 8 sp hr

Ateluse like C. serdecimspms. Sp oval,

biseriate Asc: 80 x 16-19

sp 9-10 x 6.5 - 11 Paras hyaline, very

slightly Capitate

cf. laticus ✓

Sp. minima ✓ spms halved

Saccobolus 4 x 2 trapezoid-truncate spms.

minutely rayed sm 29 x 9.5-11

spms 12.5-13 x 5.5-6

minimus ✓

Aspilota small only 275 diam when

sawsted on spore Asc: 80 x 19-20

Cercophora ✓

Podospira radiating setae, not

immature Spores short
26-30-35 apertures

fasciata sp. 14.5-16 x 9.5

equal both ca 22.5. Short black neck, no hairs when old Sp.

Coprius v. small white 145 diam

sp ellipsoid 9.5 x 6.5 Asc: short clavate
biseriate 55-60 x 19

Paras hyaline, circinate

cf. laticus?

24.3 Cop. Schlose pyramid quite firm, solid, not
delicate 1 mm diam Cercophora ✓

Cop. lanolinii Welch Sp. ellipsoid 9.5-11 x 6.5
1 cm diam when cap. expanded

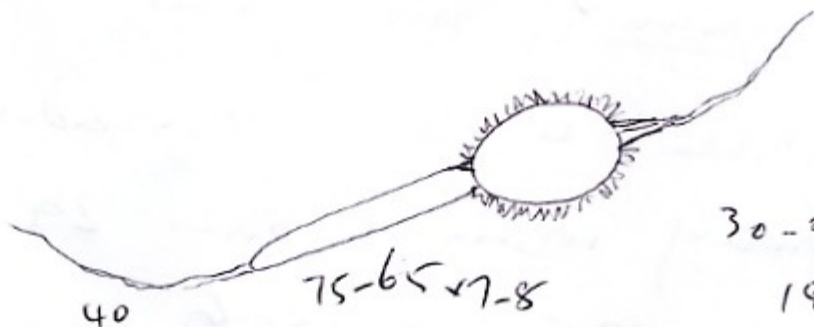
Podospore spores present with Cop. Lanol.

32 x 19-20 with distinct pedicel



Podospira immersa

8 spored, biciliate



30-35 x

19.5-22.5

~~Saccobolus~~ Saccobolus minimus ✓

White Coprotus ✓ 8-sp ca 200 diam

Asci 70 x 19-20 sp biciliate ellipsoid 9 x 6.5

perisporium hyaline v. sp. cephalate

Saccobolus ✓ 4 x 2 spore vesicles 32 x 12-13

apothecia layer ad base dorsally yellow sm.

than S. minimus on this sample. Spores v. latroedly

frank ✓



12-13 x 6.5

P. gracile ✓ Sarcote 6 sp. 480 x 185
white spine ~~ness~~ 385 x 140

a few small simple setae, not fuscate or aggregated. < 80 long. sp 12.5-16 x 9.5

P. immersa ✓ has become prevalent now

11.4 Cephus (arabli) ~~parade~~ P. immersa ✓

White, firm apothecia 0.9 cm diam.

Sp. hyaline, narrow ellipsoid 9.5-10.5 x 4.5-5
Smooth. Hint of blue in KI, but dominated
by brown iodine reaction. _____ ?

Cecopora ✓ asci not protuberant. paraphyses
not seen.

11.4 Apothecium capately white / hyaline 620 diam x
no hairs, margin of setae 500 high
Spores 2-seriate 130 x 13
Paraphyses 2.5 wide, not capitate, hyaline, same
ser. circulate. faint blue/glaucous with KI.

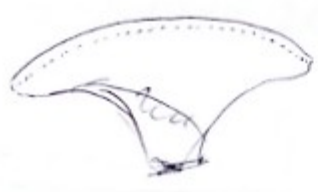
11.4 White apothecia - ser. glaucous sm.
200-350-1000 diam S. sp. uniseriate
Asci 110 x 13 cylindrical sp ellipsoid, hyaline 8 x 5
pores hyaline, hardly circulate or capitate
not strongly KI +ve

Pod. imense ✓

Cap. Canelli parvum
* wait for spores

Cephalos large, well developed apothecium -

tuberculate, about convex disc 1400 diam.



Some bluish 'hairs' around margin

excipulum of rounded paraphyses cells < 30 diam.

18.4. Podospira imense ✓

Large white 'Cephalos' as above KI -ve

sp 11-11.5 x 5-6

27.4

Cephalosporium

Schweiz.

4 spores? in fruit
32-50 long

cystidia.

Pilocystidia

spores ellipsoid

6.5 x 3.2

g.p. not markedly

excentric. Stipe 25 mm long, with cystidia as on ca

more to come - check spore no. Pellucidos?

Podospira

S-sp 32-35 x 19-19.5

pedicel well formed

biseriate. 4 cordate

25 x 6-7

Communis

Cephalosporium Canelli spores 8-9.5 x 5-6

pseudocordatis ✓

S.S. Cephalos ✓ sp.

9.5-10 x 4.5-5
uniseriate. asci 7 wide.

Pod. communis ✓

Pod. spora S. sp

48.51 x 24 biseriate

Longicaudata ✓



Reducta clavate < 50 long.

Dried S.S. Cephalos not determined

Spores regularly much smaller than
for described ~~species~~ ^{species}, + as for before.
white weak transverse, transverse body and
+ apical glabrous incandescent.

Pod. communis, longicaudata + immersa on
dried material.