

3.3 - 5.3 Thelohirs stercoris ✓ 1. poly sperm ✓

Conochaeta polymegasperma? ✓ imature

Short crown of curved setae < 45 long.

8.3 Thelohirs stercoris ✓ Conochaeta polymegasperma ✓
 many pro-nodes, with characteristic

neck setae

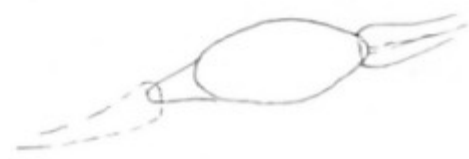


Sp 13.5-16 x 11-11.5
 x 6.5

13.3 Conochaeta polymegasperma ✓ abundant
 ± striations on all 4 petals.

16.3 C. polymegasperma ✓ Podospora appendiculata ✓

22.3 C. polymegasperma ✓ P. appendiculata ✓
 Sp 25.5-27.5
 x 12.5-13



1.4 Coprinus cadsporus ✓ Prinodia P. appendiculata ✓

All petiole raised for decking C. polymegasperma

9.4 Cop cadsporus ✓ P. appendiculata ✓ C. polymegasperma ✓

Died with all 3 above