


N17.633; W63.238. 870m. Incubated 28 Feb.

28.2 - 3.3 Mucor 5.3. Mucor

10.3 Piptocephalus net-spread brownish mesopyrenoid
sp. cylindrical 5 x 3
synzygote tips not fibrillate - } no head cells seen
4-5 celled narrow sp.
Small filament concrete
ca 10-15 wide.


16.3. P. repens ✓ extending over paper substrate and
with rhizoid synzygote

Circinella? detached Spherules 
16-20 diam.

22.3 Coprinus stercoreus ✓ P. repens ✓

31.3 P. repens Cop. stercoreus

Ascomus growth aptera 0.5-0.75 diam

v. small rough spore 11-12.5 x 6.5 

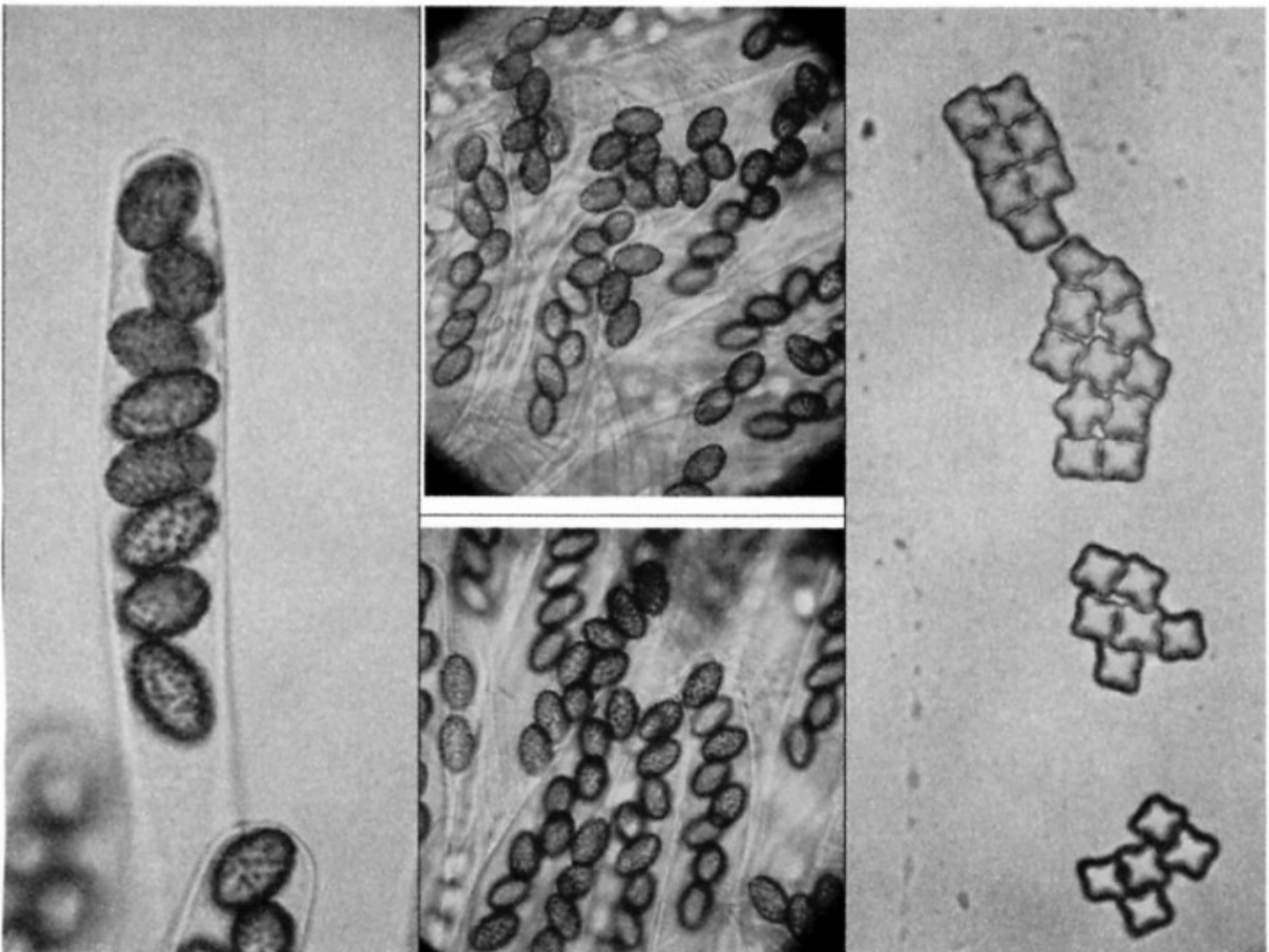
Asci ca 190-200 x 11-12-14 lineolatus ✓
87. fortraces + 87. tendency to creolate margin
yellow-green indurated 'matrix' - pores not readily
seen separately

Sp - 4 ER 2a x 5.5 helving +
 frequently diagonal s.s. minint

Chaetomium quadrangular Spores
 4.5-5

Asci indistinct - clavate

beaks clumped + erect at quadrangular
 apex - rough, branched irregularly, some
 acute



8.4 Dried with Chaetomium + Asciobolus Cinctus
 8.4 → Cp stercoaria