

8.3

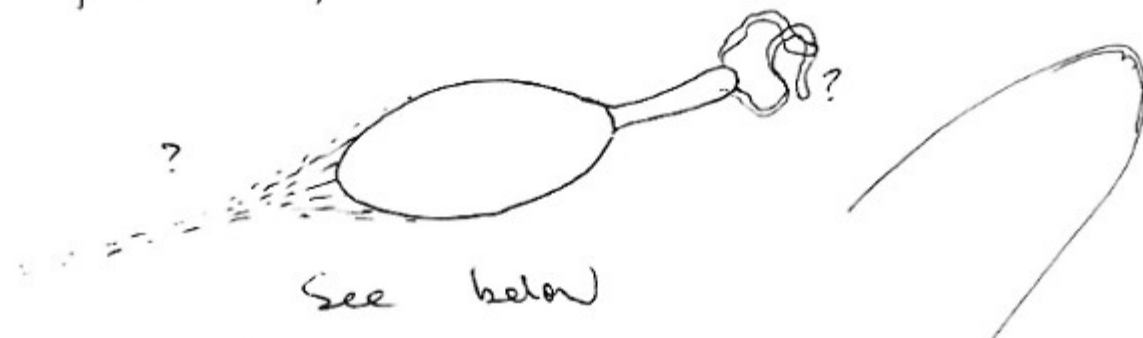
Podospora

~~Disjuncta~~ spore

SI-SS x 23-24

ly app 26-32 x 5-6 swollen at tip to 6-7

Asci frond of 3/04 Spores oblongly biserial



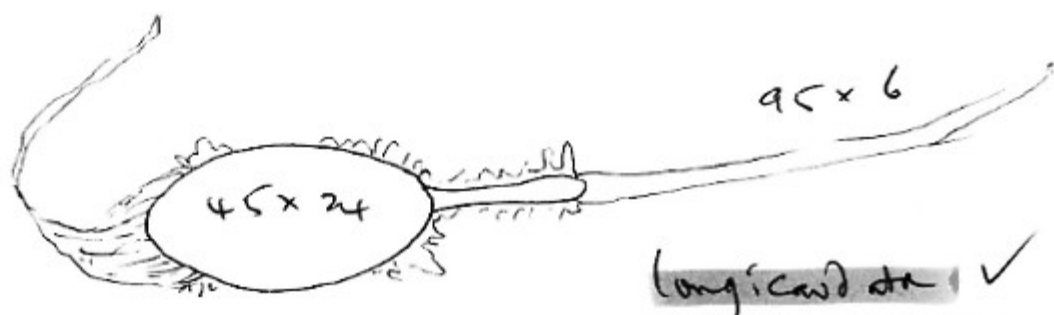
Sp. minima ✓

half spores

15-16 x 5

halved in ascus ± oblong.

Podospora



11.3 Coprinus lanahri

Spores 10-11 x 6.5 ✓

rad. divs

See above

Small ca 100

apothecium yellow

Perithecia St. capitata < C at tip. Spores broad ellipsoid

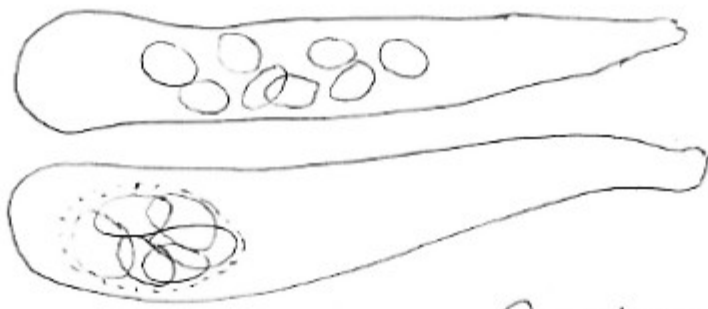
loosely associated when immature

Male spore mass ± glomerate-broad ellipsoid 32 x 23

Asci 125 x 30 blunt - flat tipped

infructed red spores & flat to see smooth 19 x 9.

Spores mass with extra-mass granular naked.



S. palmarum ✓

P. longi cardata ✓

spores uniform 4.5-5.5 x 2.5-2.6

14.3 Cercophora plentiful mature spores, heads

16-19-19.5 x 8-11

verruiform spore 60 long



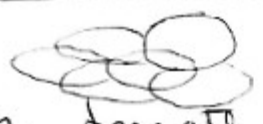
Asci with dark + distinct apical glomer 6 diam

Pentamerous inflated cells leading to shagreened, with slightly near neck. No setae, w flexuous hairs

Sordaria? ✓

Coprinus ~~Sordaria~~ ✓ epurocytes sp ellipsoid 6-7 x 4

17.3 Cop. radialis ✓ Saccoblast yellow, ap 200 diam



st. truncate 16 x 8. Saccoblast 4 x 2 w make spore, immature

cross 3.8 x 1.9 truncatus?

rather one with

C. palmarum ✓

22.3 Seccoblast asci 9.5 x 3.5. Saccoblast uneven, but

same 4 x 2 sp. st. truncate 3.5-4.2 x 1.9, part pale yellow

sp. 1.9 x 0.5

Cercophora sordariae

Cep. sudanensis Schizothecad pectice Dark
 webc. Small fragula scales of inflected cells.



apertures ca 45

Major pigmented cells 12.5-16 x 6.5-7

Apical globule clear in center

30.3 Cercophora sudanensis ✓ pigmented cell

19.5 x 8 Some pedicels also pigmented

Pod. longicauda ✓ biserial spores 48-55 x

19.5-22.5

Pedicels 29-32 x 6-7

Asc broadest at centre, fringed papillate at tip

Perithecial wall darkly opaque.

Sp. minima ✓

6.4 Cep. rad-chrs ✓

Pod. longicauda ✓

Sent to
F. Donati

fructs apical apertures clear
in an immature spore.

11.4 Cep. rad-chrs ✓ ~~Cep. rad-chrs~~

Pod. longicauda ✓



Cepheids small white f-sp

Asc 65 x 20 ✓

sp 9.5 x 6 ellipsoid hyaline

~~sp.~~

if lectus

Teleboas / Capriols

Crust

white-apitlerca



64 spores, or least

164 x 55

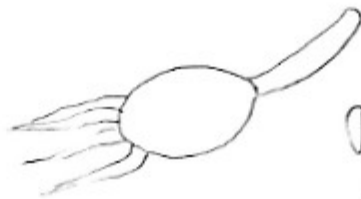
Sp 8 x 55-6
ellipsoid, hyaline

cf. C. nives

17.4 Pod. longicaudata ✓ (H)

Pod. communis ? ✓

Sp 25-29 x 17-18-19



Peduncul.
ca 25

immature Phenakospora - cleid later
Spores ellipsoid, chloroachly uniseriate-

23.4 Cep. cardispora ✓

Phenakospora minutissima ✓ Sp ellipsoid 6 x 3

immature Podospora

4.5.8 P. longicaudata ✓

Phenakospora minutissima ✓

Dried 4.5 with P. longicaudata
Phenakospora minutissima