

inc 26.6

266 Sp. 4 ER 38.5-42 x 9.5 antibiot (x) ✓

Sp. 7 tapered also tapered 190-200 x 19-20

bristly colored Spores 42-45 x 9-10 uniseriate



cells slightly
± hemispherical,
elongated

3rd cell down sl. larger
than the rest. intercalary

under than long. Apical
basal slightly tapered

Small spores commutata (x) (see 32/00)

Another v. similar but 9-celled. variants?

(Some 9-celled also found in fruit pseudotecum)
Some size still 3rd cell largest

Saccobas ✓ present but old & dry not
identifiable Spore vess 29 x 9

Includitschiz 17.5-19 x 8-7 monilia (x) ✓

also 125, expands to 200 x 16-20.

initially uniseriate, becoming biseriate with expansion

Setae score up to 25

306 Includitschiz monilia ✓

Saccobas no vegetative yet Spores brown, smooth
12.5-13 x 6.5

7.7. Asc. immersor (x) ✓ 8 sp. 54-55 x 38-39

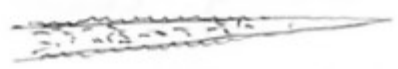
Lasiodia - sparsely setae 8-sp asc 25 diam

sp biserial broad ellipsoid 14.5-16 x 9.5-10

Lasiodia (x)

Pedopora (x) short pointed setae at neck, roughened.

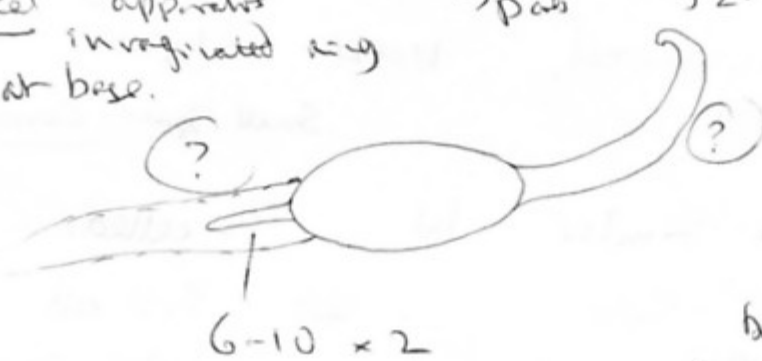
up to 60 long



8 sp uniseriate asci 29-30 diam x 290-300 long

no apical apparatus
sp. Papillate at base.

Spores 32-42 x 19-22.5
-45



6-10 x 2

24 apps
broad attenuated,
basal covering by.

10.7 Pectecium immersed, except for neck. 700 high x 500 diam
asci ca 320-340 x 29. Spores uniseriate, single apical g.p.
rough setae at neck. No free spores, so 24 apps not
visible but single primary visible in young spores in ascus

Saccobolus (x) 4x2 Spores 35-38 x 16-13

spores bicolor truncate, flaky exospore. sp 14-16 x 7

asci ca 110-120 x 30

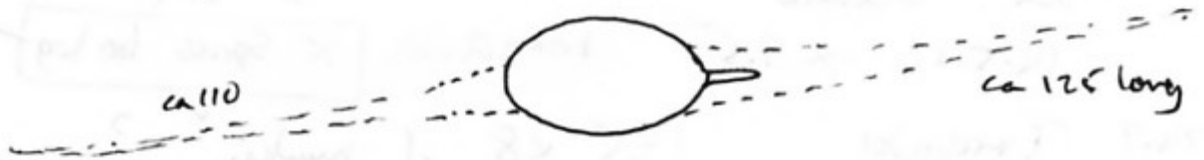
iridescent tinge to base of apothecium, and some
spore clumps fading to 5+3+2 later, but all
uncolored groups 4x2

13.7 Sp. 4ER 46.5-48 x 9.5-10
 -94.5 ✓
 under ascus (60x26) intermedia
Asc. immersus ✓

Sacc. purplish apo, but spores 4x2?

Spores with distinct cracks/furrows sm. 38-40 x 16
 15 x 8 ascus 95 x 32
 si. truncate

17.7 Podospira ✓ setae ± immersed apart from
 proximal end. 700 diam x ca 1100 tall
 rough erect, cuticle pointed, tapered, non-septate setae
 < 65 long. Spores obliq. uniseptate 38-42 x 19.5-22.5
 small simple cylindrical by app. 6 x 2
 Ascus 330 x 29



2ys with little form or stroke

Sp. antrax ✓ Sp. cf comitata ✓ mostly 7-celled
 diagonal g. slit 42 x 8

Ascob. immersus ✓ Laetharia ✓

Saccobolus holocarpous 3+3+2 sm 32 x 14-15
 spores smooth-fueky

Others very similar, but with 4x2 - irregular
 arrangement

20.7 Tiny white hyaline Coprinus (x) - ? ✓

Initially alternately uniseriate, becoming more biseriata

Spores short globose 7.5-9

asci ca 85 x 12 cylindrical. Paras dense, hyaline

st. yellowish under mic. Apo looks firm textured

(seen before = 57/99) to reaction with KJ
[similar desc, but asci large - 125um]

Succothraus Sm 35-38 x 16. Some clearly 4x2
Others more irregular to 3+3+2

Spores grey purple, not funiculate 14-15 x 8

asci 125 x 30 flaky rough

Paras uniseriate, st. expanded above

Asc. imersus ✓

Cheekum spiral hairs, rough. Spores limoniform. Sm of group

asci clavate when young, grey when mature
14.5-16 x 7.5 body divides [X Spores too big] ok - this is ascus size

24.7 Trechodes (P.S) x 8 cf. munkii ? S. anseris ✓

White Coprinus - A sp. 4 (x) sp ellipsoid hyaline biseriata
11-11.5 x 8

31.7 Podospira rough setae. 1 immature, ± immersed.

1 mature Spores 41-42 x 22-23

- This is an Asium 'by app' seen before is central canal / striation.

at least are apical g.p S.sp.

no clear ascus apical striation. Keys to Wintner but rough setae not mentioned?

Coprinus ^{-D} white S-sp asci 120-125 x 22

basinate truncate ellipsoid spore 11-12 x 8

Perithecia dense, crowded pale-bronze on waste
filamentous 1-2 diam, not inflated at tip

Saccobolus depauperatus

4-8 Coprinus as above asci 110-115 x 20

tapering to stalk, cylindrical clavate abort.

spores ~~9-10~~ x 7.5 asci probably from
11-13 mycelium when ripe.

apo st. orange wided mic. Perithecia five or six

apo ca 400 diam.

Sp. intermedia ✓

Small cleistothecial apo Saccobolus with spores

completely free 16 x 9.5

truncate yellowish apo.

greyish st. head-

Sp. 4T ✓ cells rounded 38.5-41.5 x 11 ^{-4.5} basinate

parallel g. st. spored cells tapered slightly.

asci with particularly long stalked, but st tapered to base

Ammon as 31.7 sp. 38.5 x 21 S-sp.

Sp. antrax ✓

intercalary cells st. wider than long: 9.5 long x 11 beside
apical 11.25-12.5 long

98. Arrium ✓ with rough setae. Thecium below neck
olivaceous toment. Sp. $35 \times 19-19.5$

(?) 1 sp at each end. ca 4-5 diam asci ca $320-350 \times 29-32$
oblongly uniseriate

T. mundii $19.5-21 \times 8$ Sp. intermedia ✓

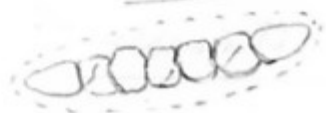
Saccobius ✓ yellowish to 3+3+2 sm $32 \times 14-15$
sp rounded, not truncate smooth - finely $12.5-14 \times 8$

Comoros white - creamish asci $120-130 \times 17-18$
Some partially uniseriate S. sp. $10.5-12.5 \times 7.5-8$
Paras dense, straight, not inflated. St. yellowish
er-nasse sp. ca $0.2-0.34$ diam

Sp. of ~~comitata~~?

ascus 190×22

Spores $55-62.5 \times 10-11$ 7-celled



3rd cell largest tapered end cells
intercalary's squish castrated at septa
2-septal g. slits embryally breaking up.

~~asci/spores~~ Spores consistently 7-celled. if hexans,
not Spores too large. keys to americana (X)
in A+C. See

14.8 Arrium ✓ rough-setae abundant S. sp. →

Sp. intermedia ✓ Trocha. mundii ✓

Camarosphaera

Sp. $9.5 \times 9.5 \times 6$

asci ca 110-120 x 10-11
Setae short
, ab red only, < 45 if ~~hemisphaera~~ \otimes

Leucoplasma?
(not recorded see over) ✓
Papilla at

→ Ascom? - hint of tiny
basal part of spine



S. sp. uniseriate

38.5×20

asci ca 280 x 32

fr. form - rot

typical Ascom ampillate

apical g.p. basal papilla distinct.

ca 2 x 2

Basal Papilla

21.8 Podospira ✓ rough setae

Caprotia ✓ white - pale ochraceous (depends on age?)

Spores 12.5-13 x 8

S. sp. para uniseriate
biseriate

asci ca 110 x 21
-130

Trichobolus ✓ 21 x 8

Sp. uniseriate ✓

Saccobolus 3+3+2

Spores 30-32 x 16

Sp. purple 14.5 x 8

smooth - occas finely verrucous

depauperatus ✓

26.8 Pod. decipiens ✓ - type
S. sp.

Sp 38.5-41.5 x 22.5 - 21

Setae Armon / Pod ✓

uniseriate, apical gp.

Coprolites ✓ ascii 120-140 x 21 white
biseriate spms 12.5-13 x 8 large
- .5mm - dec

Trochodolites 19-15.5 x 7 monilii ✓

2.9 Cenozocheles Wernicke ✓ 12-13 x 9-10 x 6
Setae < 30 8-sp

Rough same podospore

good clear apical
g.p., shortly
off centre.
3-3.5 diam

Coprolites as above ascii 120-140

Drawn 2.9 with good podospore