

God Roseau, Dominica MTR 44.3.50
61° 22' 45" W 15° 17' 44" N

Inc. 29.3

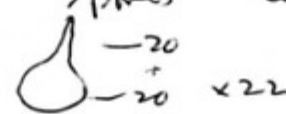
31.3 6.4 Pilobows Pale orange, ellipsoid
3/4 7-10 x 6-7 Crystalline ✓

Pilobows ± hyaline, very little colour
ellipsoid 6 x 3.5 unbarred ✓

9.4 1mm Forchella minima ?

P. crystalline ✓, P. unbarred ✓

13.4 Cap leptoneus check - immature

16.4 Coprins Spines ellipsoid, asymmetric g.p., 10 x 6
stem slender  Cap slender tapered, von-carstate.
Iodoptans carneus ✓ Sp. 19-19.5 x 11.5-12
leptoneus ✓

check Sp. minima

18.4 Cap leptoneus ✓ Iodo carneus ✓

Sp. minima ✓ hairy, sp. 4ER 26 x 4

Azi 55 x 16

27.4 Cap. lamelli forest pyxidate 4-spacer. Cap 3mm
helme expanding Spines ellipsoid, st. tapered 8-9.5 x 6

Pseudorad-obs ✓

Cap. stercorans ✓

Iodo carneus ✓

Sp. minima ✓

30.4 Cap. stercorarius ✓ (odo corner ✓) Cap. pseudora
 6.5 Cap. stercorarius (odo corner ✓) pseudoradiatus

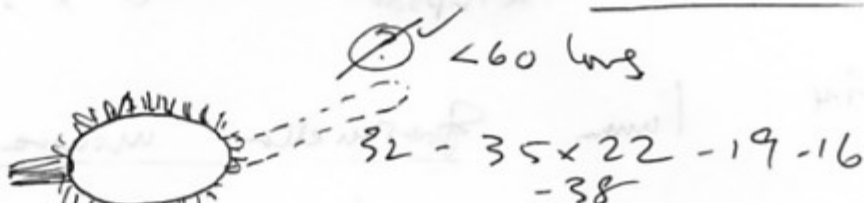
Cap. setulosi long. dense dense setae on cap to 20 μm
 lot capitula. no sphaerocytes

no facial cystidia. Too immature for spores = 8 x 4 ?

12.5 Cap. sterc ✓ Cap. pseudoradiatus ✓ Sp = Pellularia minima ✓

Podospora f. sp.

perithecia ca 910 high
 x 800



relatively variable in size

4-5 μm L

apical g.p.

no hairs or setae. Dark neck.

Seen before?

P. immersa ?

Cerophora immature apical perithecia 4-5 μm

See 5/98 :- identified as P. immersa

17.5 Cap. stercorarius ✓ l. corner ✓

Pimosa ✓

inflated, cylindrical 14 app

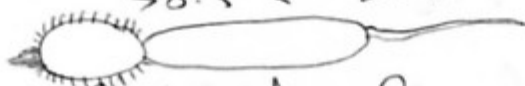
70 x 13

Asci f. sp ca 320 x 65

spores

35-42
 38.5 x 22.5

no perithecia setae



Small white Cerophora. Asc: f. sp. basinate ca. 80 x 16

spores 9 x 6 ellipsoid hyaline. Paras ribbed
 - five, non-capitate, non-ornamented? cf lactus

Cerophora perithecia ± immersed vermiform
 spores 32 x 3 apical appendages ± equal ca 30
 neck black cylindrical 80 long x 50. No obvious
 setae or scales. General impression schizothecoid (Sporinella).

Small apical granules present in some
also 3-5 diam. (make size ca 150-165
x 10-12

Resurfaced species too small for any
described in Lundquist 1972 = sp. 2 in
database

Same as 1/96 + 2/98 from

23.5 Cap. stercoraria ✓ l. carnea ✓ St John USVI
Pod imesa ✓ entered as
of Coprophila

Dried 23.5