

cattle

O'Reillys,
Lamington, Qld

28°14'9"S; 153°7'34"E 26.10.99 74/99

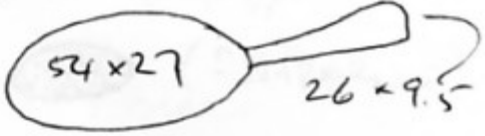
Inc:
1.12
2.12

Sporiumella 4 ER 64 - 67 \checkmark x 11.5
tereti-ovata ? \checkmark

Ascobius Sticherdes-type spores present 35-38 x 19.5-20
cf amoenus ? sp.2

Podospore short perpendicular, not egg, not inflexed
setae < 30

old + dry. ly app slightly brown 38 x 4, 87.
Carinate (swollen at tip.

Spores 55-48 x 27-29
22.5- 

Perithecial wall dark, opaque, hyaline interlocking small
cells < 10 asci + 2ys. not visible.

7.12 Sp 4 ER immature 55-58 \checkmark 11.2. (cf 46/99) fimiseda \checkmark
(?) intermedia ? dead

Sp 4 (R?) 22.5 \checkmark x 4.5-5 (?) pulchella \checkmark

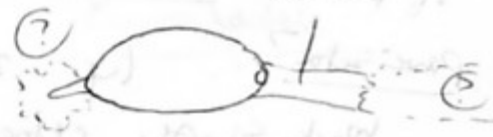
Pod. fimiseda \checkmark
Coniochecka few short (< 30) setae

Spores small discoid ca 11 x 7 x 5
asci ca 6 x 10 sp.1 (?)

Podospore sparse brown flexuous hairs
S. sp, but not all developing 35-45 x 19-21
-48

ly app simple, small 6-7 x 2 22-30 (?)

Same as 8.1?
Asci ca 280-300 x 45



imm Iod. carneus? ✓ KI blue

Phoma ellipsoid hyaline, oblong spores

5.5-6.5 x 3.

asci ca 70 x 5

apical pore KI -ve

PACKET

minutissima ✓

16.12 Podospira 8-sp

aurate/furzed or type hairs at neck

5.5 x 2.6

fimiseda ✓

Sp. 4ER 61-64 x 11-11.5 ✓

teretipora ✓

~~Podospira~~ - Schizotheca 8-spored. Spores hy

app ca 6 x 3 Spore 41-45 x 19.5-21
-48

(Same as 7.12?)



hollow or hair? ∞

Small, poorly developed scales of aggregated inflated cells
Denticia > 800 high x 400 brown flexuous hyphae below

In apps not easily seen, especially basal, even in II

asci ca 350-380 x 45. uniseriate

✓ curvuloides

24.12 Sch. curvuloides ✓

Phoma minutissima **PACKET**

Podospira deprens 8-sp

apical pore not blue

in KI (very small)

-difficult to judge, even @ x100

3.1.00 Sch. curvuloides ✓

no detail of perithecia Podospira 4-spored.

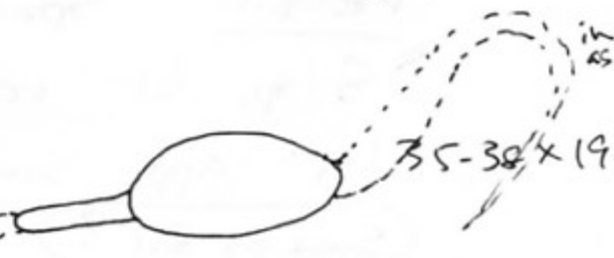
parviseta? ✓

ly 26-30 x 5

120 long

asci 220-250 x 35-40

black, shortly setae hairs.



Saccobolus Spore mass 3+3+2 gray purple fealcy
 ✓ 42 x 16 Spores 16 x 7 bedcii?

8.1 Schizothecium Sp. 41-48 x 22.5-22
 biseriata Small tapered by app ca 8 x 2
 2ys exspode to faint zone in H₂O

odd curvuloides?



Phanerochaete minutissima

Ascobolus ? ✓ Small white apothecia. Spores biseriata,
 minutely warty, with distinct papilla at each
 end 25-22.5 x 10 v. pale.



Azci ca 175 x 30 gel all round.
 Pomeroy KI = Thecophora sp.1 (see 2.1 + 3.2)

Also a single Ascobolus immersus Spore 51.5 x 28

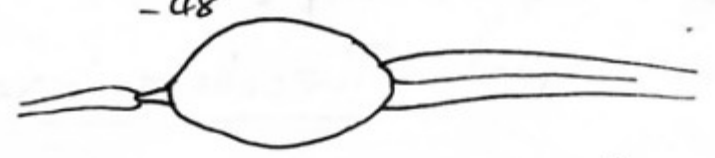
Coniochaeta 8 x 9 x 7-8 x 6 Setae scarce
 Sp.1 < 30

Sporomniella 4ER 64-70 x 125
 ascos 150 x 30 tenetigera ✓

Sporomniella 4ER 30-32 x 5 minima ✓

14.1 Schizothecium S.sp. brown flexure below, small
 egg, inflated scales around neck.

Spores 38.5-42 x 19.5-21-23 uniseriate
 -48



curvuloides ✓

P. communis 4. count 8-sp
 sp 29-32 x 19-16 14 app. 16-19 x 5

21.1 Phoma chrysina minutissima ✓ Sch. curvata ✓

Coprinus cordisporus developing?

24.1 Sch. curvata ✓ Pod. communis ✓

Pod. pleiospora 16-sp.

Ascobolus as on 8.1, with papillate ends of
 exopore Sp 22-25 x 10 See below
3.2
 distinctly colored brownish when
 mature / after wise be thinking of Thecoteles

SLIDE

Cop. cordisporus still developing

30.1 sp. cordisporus 8K Sp. 7-8 x 7-8 x 4-5

Sch. curvata ✓ Pod. communis ✓

Sp. uer 66-70 x 10-12 fenestrifera ✓
 asci 190-200 x 30

3.2 Sch. curvata ✓

"Ascobolus" as 24.1. Thecoteles type ascus h/p

Spores 22.5 x 9.5

Small spored Thecoteles 'civens'

SLIDE

sp. 1.

Aspiltece ca 250-350 diam x 250 high

immature asci 160 x 25

Sp 4 ER

67-71 x 12.5-13

teretispora ✓

Pilobolus

very small fine sporophores

Spores pale orange ellipsoid 8 x 5 ✓

6.2

Thecoascus paeciloid

22-26 x 11

Crystallinus ✓

hymenial surface blue
ink. 1 um, asci
purple.

Pod. communis ✓

Sp. minima ✓

Sp 4 ER 57-61 x 10

Asci 190-200 x 30

Sch. curvuloides ✓

intermedia ✓

4.4 Cop. cordisporus ✓

Sacc. bekkii ✓

Sch. curvuloides ✓

AB:-

At hawaiiensis

Ascobolus immersus

Ascobolus sp. 2

Saccobolus bekkii? ✓

Thecotheus sp. [sp]

Coniochaeta sp. 1 = ? leucophaea

Iodophanus carneus = ? variegatus

Phomatospora minutissima [p] ✓

Podospora communis ✓

Podospora decipiens

Podospora fimiseda ✓

Podospora pauciseta ✓

Podospora pleiospora

Schizothecium curvuloides

Sporormiella intermedia

Sporormiella minima

Sporormiella pulchella

Sporormiella teretispora ✓

Coprinus cordisporus

Pilobolus crystallinus

P. anserina

A. hawaiiensis

Thecotheus

Spores 22.5-25.5

x 10-11

Sp. 1 ✓

thin gel halo in II

all round.

Ascom ?

large black heavy perithecia

8 sp.

122 x 55

118 x 54

125 x 53

Ascom 2 g.p

Ascom gels < 160



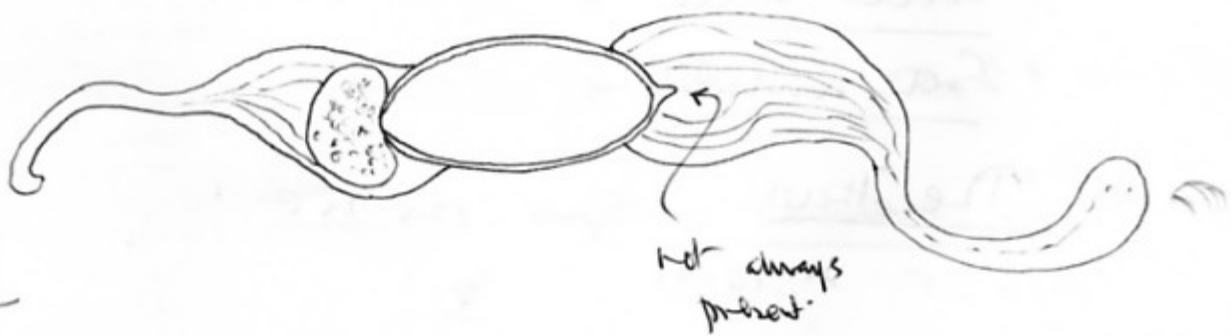
appadges broad v-fused at base, compound,
 elements coming together about 1/2 length to
 simple top. < 50 wide at neck, at tip 10

Asci clavate, widest at base, biserial
 no apical stroke 620 x 130-140 - long

tapering basal portion

Spores golden when maturity, then
 dark ± orange black

Same spores with thickening of wall at
 base, and with base of apical appendage
 filled with cytoplasm (?) no septum visible.



SLIDE

6.4 Pezizaceae sp. 130-275 diam 200-275 tall
 Asci 220 x 30 Spores 22.5-25.5 x 10-10.2

9.4 Saccobolus yellow asci 130 x 30, S. mass 4 x 2, 45-52
 Spores minutely verrucate, truncate 21-22 x 9.5-10 16.
Citrinus

SLIDE

134 Thecotheca vs dried

30-4 Phoma minutissima ✓ Thecotheca dried ✓

Podospora communis ✓

64 Phoma minutissima ✓ Sacc beckii ✓

Pod. communis ✓

Thecotheca 275 diam x 400 tall.

hyaline. basal cells polygonal / rounded <16
-20

Spores 22.5 x 9.5, smoke-brown-purple diam
(pale)

st. immature ascus 160 x 32 asc stalk ca 25 long

8. sp. paraphyses hyaline 3 diam,

all of one type? Some finer & branched

apical papilla ca 2 μ m. No collarette.

distinctly biserial spores.

235 Thecotheca

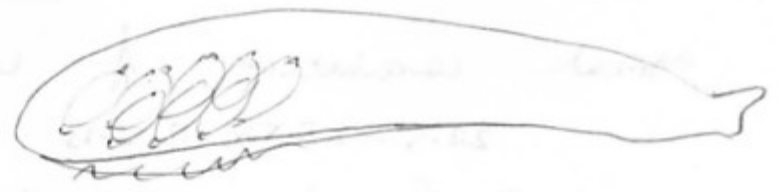
apothecia	230	high	x	220
	230		x	150
	210		x	140
	240		x	150
	275		x	220

Asci $\frac{62}{200} \times 32$

Spores distinctly biserial
22.5 x 9.5

examine Botrychae cells

6-15 diam



Paras simple, hyaline 3 diam.

28.5 still producing Thecoteus

Aspora 160 diam + 240 diam

Spores in this are

very narrow

22.5-25-26 x 8-9

30.5 275 x 350 high

125 x 170

Asp. 195 x 35 p.sp. 70 x 23

no fibrils extending from apertures in II
gel surrounding whole spore

Spores 22.5 x 9.5-10
-24



apertures ca 4 wide x 2 tall

no collarettes

Some plates tried

1.6

apo 115 x 210 tall
240 x 300

2 asci 29 diam

2 asci 29, 38 diam. x 210

6.6 Abundant 'I. conense' redeveloped. Spores with
apical concentrations of larger verrucae

22.5-25.5 x 12.5-13



not strongly blue in KI

1.6.00 Thero Apo 300 diam x 275 tall Photographed
160 x

Pores Simple hyaline, 3 diam

Excipulum polygonal cells < 20

Asci with short wavy spores

128 x 40 abruptly constricted below to stalk

Young asci KI +ve

17.7 flat, white waxy apothecium 600 diam
Smooth excipulum of isodiametric cells below < 16
diam, smaller above to margin. Small
central point of attachment.

Hymenium ca 30 deep looks like Orbitia

Pores clavate expanded above, with apical
hyaline vesicle. No details of spores or asci
visible. No reaction in KI visible.

Abundant Loxophora with leaves ornamented
at tips 25-26 x 12.5-13

Abundant P. gigantea

Cercophora present

14.8 'Orbitia' 0.4 mm diam centrally attached

asci ca 30 x 3 can't detect spores.

present