

cattle Proby's Grave, Hawker, 32°5'12"S; 138°5'21"E 6.10.99 52/99

SA

line 411

5.11

Ascobolus immersus ✓ 8 spores 51-58 x 32

Orange chitate apothecia Cheilymenia? Ascii ca 175 x 32

Spores br. ellipsoid, hyaline, puffy base ca 14.5 x 11.2

Setae not rooting or branched, ca 100 long, thick-walled, -160 not separate obtuse tip

Paras 3, not capitata

Spores with thin gel, holding 8 together at dehiscence (dehiscing - not seen again) doesn't key at? sp.

~~Podopora~~ / Arnimia 4 spores no primary apperage.

Spore body 48-42 x 22-24 apperages in ascus 'firm', structureless, 'glassy'. Apical app. inserted sl. laterally. NO g.p.s seen.

Perithecia with unilateral spine of egg, but non-inflated setae.

arizonense ✓

Sporiumella 4 ER drag g. slit. Small pseudo-cen

135 diam. Spores 44-40-38.5 x 9.5

Asci ca 130 x 22 australis ✓

7.11

Asc. immersus ✓ Arnimia arizonense ✓

Laszlowia 21 x 12.5 broad ellipsoid

asci 32 diam Setae short < 120 Arnimia ✓

11.11

Lodophanes ✓ 19.5-20 x 12-12.5 Paras clavate to 10

Ascobolus immersus ✓ Cephus stercorarius ✓ 8 x 4.5.

Arnimia arizonense ✓ 48 x 22.5 asymmetric multiple tufts of setae < 300 long. Some perithecia without setae

Pilobows Spores orange 13 x 6-7 ✓
kleini

17.11 Cap. stercorarius ✓ Amium rizonense ✓

Delitzschia ✓ 61-57-55 x 26 cf. winkleri ✓
 cells rounded, sb. pointed at some tips. Not (?)
 deeply crenate or non-dolomite spm.

28.11 Cap. stercorarius ✓ Saccobius 3+3+2 Smass 29-32 x 11
 Spores smooth, rounded 11-12.5 x 5.5 deparaphys ✓
Amium rizonense ✓ plentiful, same with no sides

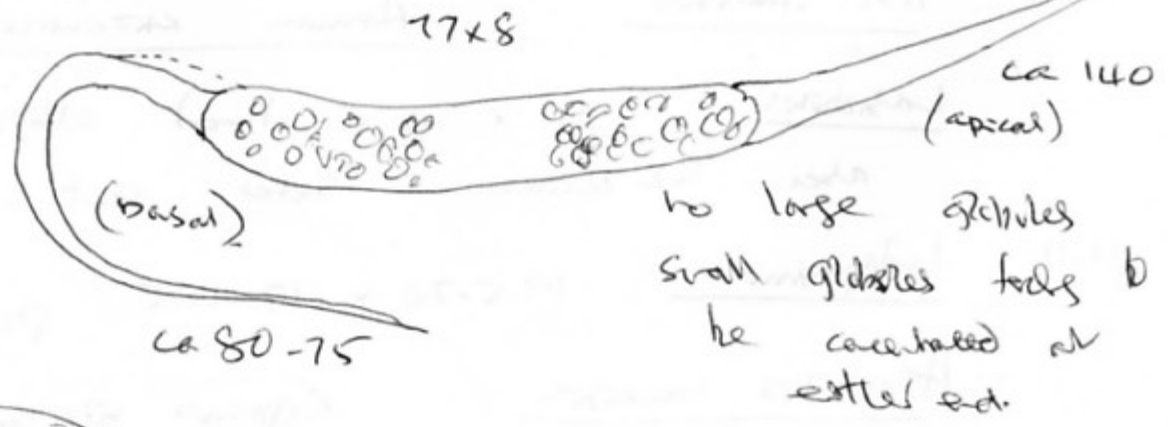
Cercophara ✓ no mature spores. Immature spores
 heads 24-25.5 x 11.5-12.5 1/4 app ca 45-50 x 6.5
 apical 2/1 ca 50-60 (curled)

Ascos with apical gland ca 6 diam

Perithecia partially immersed periform ca. 900 x 600 diam
 hairy below - neck naked? perithecial body + neck
 opaque v. dark brown - black carbonaceous?

immature spore

PACKET



unresolved spores & appendages much too
 large for C. misura C. sp. 1

7.12 Podophorus carveri ✓ 19.5 x 10

Podospira fumida ♂ sp. 55 x 25-26

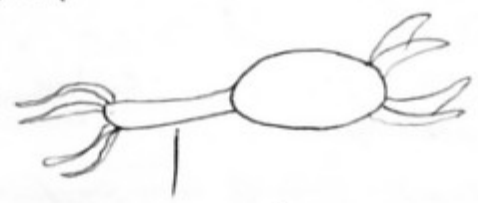
ly appendage ♂- brown < 55 long, collapsing ✓

Lim Coprinus stercorarius ✓

Arniom arizense ✓ Podospira decipies ✓

18.12 Podospira sp 29-32 x 18.5-19.5

♂ sp hirsute



Comments ✓
PACKET

no or very few
hairs at neck. no setae,
or ages scales 26-24 x 6

Arniom arizense asymmetrical spiky setae. ✓

4. sp 46 x 24

PACKET

Spiranella old spm fragment 13-14 x 10 ✓

intermedia?

Saccobius ca 500 diam. hirsute 3+3+2

sm 27-29 x 12 spm 12.5 x 6 smooth

Asci 110-130 x 16

dep appendages ✓

24.12 Cercophora ✓ Squared spms 70-72 x 8

apical appendage ca 80-65
basal appendage ca 60-55
70- sp.1

venterium v. dark, some brown hairs, no
Schizo type scales or setae

Pod Comments S.sp 4 combs 2y
 26-29 x 17.5-18 1y 20 x 6

Cap. stercomers

dark perithecium with 2-3 agglutinated, but
 non-inflated spikes - Spore 42-51 x 22
 no detail visible - might be Amium?

3.1.00

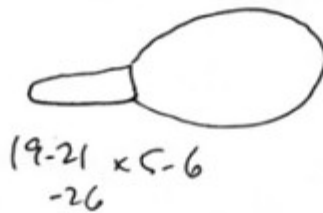
Amium Setae perithecium. Spore 48-51 x 22

no asci visible
 probably arizense as before
 Setae Spiky, egg but non inflated
 < 180 long

different from
~~subsectat f. sp~~ - ~~unresolved~~ - ~~no more~~ ~~setae~~ ~~seen~~
 see 8-1

Podospira

S.sp



Sp 26-29 x 16

19-21 x 5-6
 -26



flexose hairy
 perithecium body - red material,
 no setae

hairy faint in II

8.1

Podospira S-sp

Pyram perithecium no setae or

egg scales

apical sp. 29-32 x 16-19

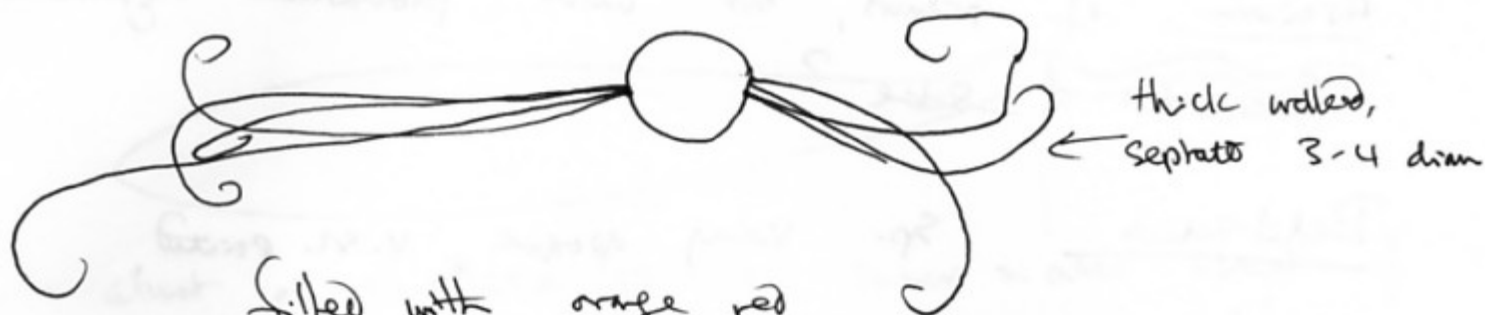
1y 20-24 x 6-7



Comments

PACKET

Cerata with long straight apperages curled at tip
Lophotrochozoa? 130x105 Hecium black, no structure
 visible



Filled with orange red
 Spines ± globose 5µm to 8µm ellipsoid 5-6 x 4-5
 smooth

SLIDE

Kermia nitida ✓

Amium ✓ 45-42 x 22.5-25
 (see 3.1) arizonense

Setae - 1 asymmetrical
 Spike

14.1

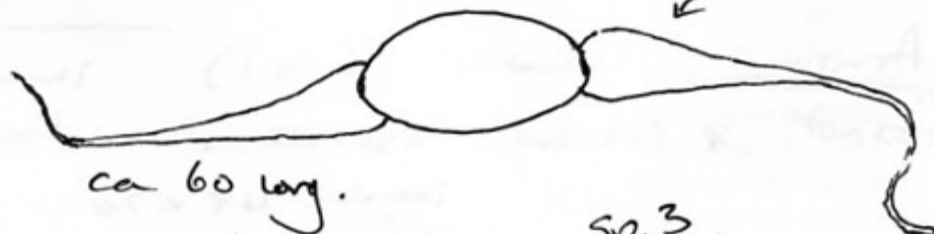
Kermia nitida ✓ **PACKET**

Amium very large, black pentteca
 no scales, flexuous hairs present at base of
 neck + below.

Spines 8 - sometimes only 4 making
 42-48 x 22-23 perianth pore at each end.
 -51

apperages very broad at base, tapering
 rapidly, so relatively stout.

16 wide
 +8



ca 60 long.
 no structure

sp. 3.

Podospira ✓ pyriform immersed. dark flexuous hairy
 below. No setae Commensal sp. 29-35 x 19-21
 4-carinate apical app. **PACKET** 14 app 19-29 x 6

Secondaries 3+3+2 Sm 26-29 x 10-11

Spores sl. rough/patehy cracked. 13 x 6

Arrium cf. pteris, hr with pronounced asymmetric fascicula of setae?

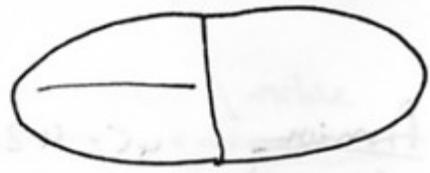
Delitschia

Sp. very opaque, v. sl. pointed,

transverse septa 54-58 x 24

v. sl. constricted at septa

cf. wittieri



21.1 Coprinus miser

P. communis ✓ 29 x 19.5

24.1 P. communis ✓

30.1 Sp. 4 ER large fragmented spore
and 19-20 x 13 intermediates 20 x 14

Cylindrospora ? ✓

P. communis ✓

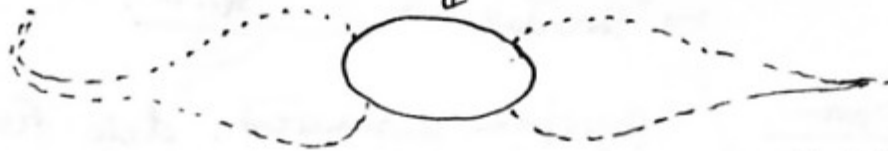
Arrium, spiky setae
as 14.1

3.2 Kernia nikida ✓

Abundant Pod. communis ✓

6.2 Arrium immob (cf 14.1) imm also 8-sp.
fused sp. oblong biseriate. Heavy

immob 45 x 20



appx ca
100-130 x

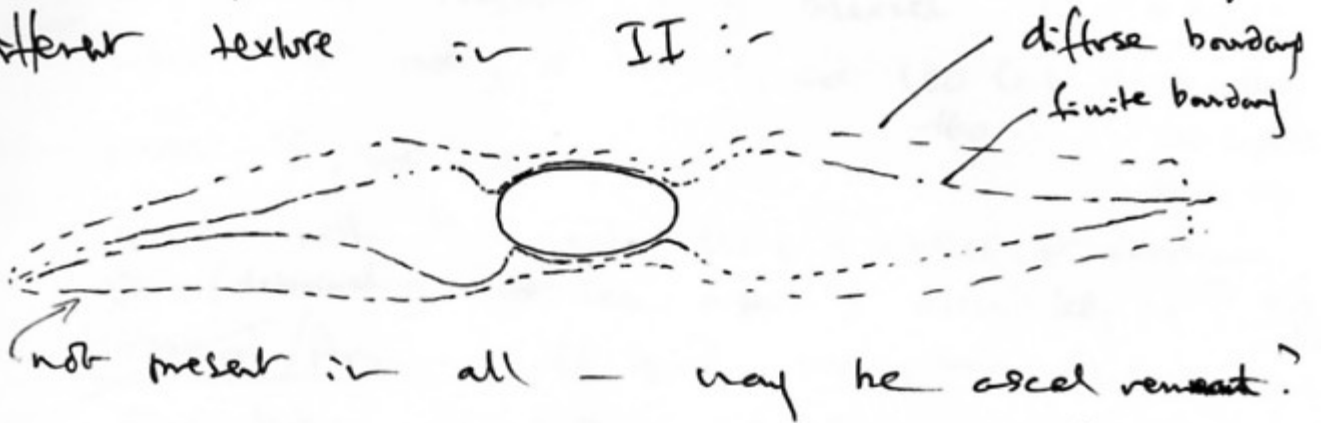
25-28 at base
widest

tapering sharply.

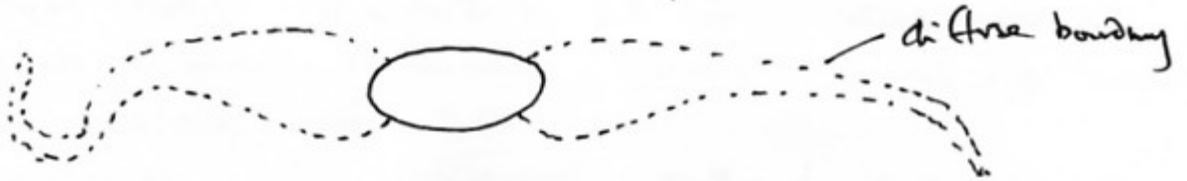
Asci w/o apical structure, ca 300 x 50
with long stalk



almost as if there is an inner + outer sheath of
different texture in II :-

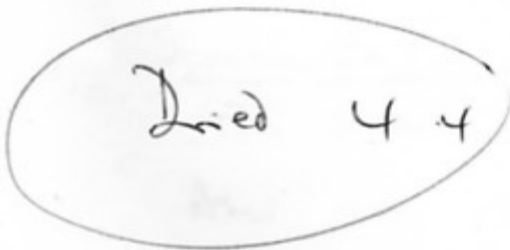


more
typical



Sp. 3

4.4.



- Ascobolus immersus*
- Cheilymenia* sp.
- Iodophanus carneus*
- Lasiobolus cuniculi*
- Saccobolus depauperatus*
- Arniium arizonense* [p]
- Arniium* sp. 3 [s]
- Cercophora* sp. 1 [p]
- Delitschia* cf. *winteri*
- Kernia nitida* [sp]
- Podospora communis* [p]
- Podospora decipiens*
- Podospora fimiseda*
- Sporormiella australis*
- Sporormiella cylindrospora*
- Sporormiella intermedia*
- Coprinus miser*
- Coprinus stercoreus*
- Pilobolus kleinii*