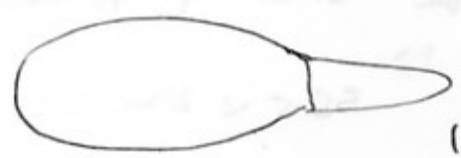


grey Porongporup Range 34°40'57"S; 117°52'16"E 1.10.99 43/99  
kangaroo NP, WA inc. 1.11

3.11 Podospira sp - difficult to see details of asci & appendages. 30.5 - 34 x 17.5-18

7.11 Podospira 8-sp basinate. No setae/hairs



60 - 54.5 x 31-32

ly app 22 x 13 at base, tapering

8 spores at first - few after watering  
24 apps?

Podospira spores minutely verrucose 24-27 x 12-12.5

Schizothecium v. sparse & small aggregated cells  
21-32 x 16-19 small ly app ca 6 x 2,  
Zys simple. ✓ glutinous


Sporormiella 4 ER asci 22.5 x 35  
spores 67-69 x 13  
-70 lenitigera ✓

11.11 Small albidus type Ascobolus 8-19.5-21 x 9.5  
-22 minutely & evenly warted (f. lanatus) ✓  
asus ca 210 x 27. faint gel bodies 8 dispersed  
Spores together in II.

Podospira Spathulate ly app when imm/ collapsing. ca 12 long. -16 x 6  
Spore body 31. bean shaped 32-34 x 17.5  
no secondary visible in water. Spiky setose hairs  
at neck - agg. but var inflated. Only faint 24 in II -  
no form/structure

Schizothecium 4 sp. sparse agg. hairs ✓  
Spores 19-19.5 x 11-11.5 tetraxipium


Saccobolus cf deparvulus Spore mass 35 x 16 ✓  
Spores rough 14 x 8

Schizothecium, ✓ pear, ridged agg. scales 8 sp  
32 x 17 Simple small by app 9.5 

Podospira decipies ✓ 8-sp 38.5 x 22

Sporomniella 4ER lobed spores ✓ 16-18 x 6  
≡ 32-36 x 6 ✓

17.11 Coprinus non-inflated fibrous veil minima  
Spores v. black, ellipsoid 8 x 5 4 spred  
? unresolved

Podospira  
v. spiked ✓   
cf excantica 32 x 35 x 17.5-18  
st. phaeoform  
16 x 6

Pod. decipies ✓

Ridged Schizothecium 32 x 17. 8 sp. Lecks  
Sometimes very long glucos ✓

Ascobolus ✓ 22.5 x 9.5 minutely warty

albous type apo. hyaline.

29.11 Schizothecium 8 sp 32 x 16 ✓ as above

Pod. antrax 4 sp 67 x 29 ✓ Pod. decipies ✓ - some  
by apps very long < 55 μm

Ascobolus albous type apothecia 22.5 x 9 minutely  
warty, clear all-rounded set. Pores hyaline, non-cap.  
< 3 μm

Phomatospora

immersed, hr for anical neck  
ca 50 x 10

peritheca ca ca 120-150 diam

PACKET

spores ellipsoid hyaline 4.5 x 3

minhassina

Asci rather fragile + indistinct ca. 50-60 x 5-6, wide apart  
to allow at least some spores to be obtained.

Spilkey peritheca cf. Pod. excentra 32-35 x 17.5-18

st. plateiform

8.12

Podospira

8-sp. redd setae at neck < 150

4 app. 2ys

spores 55-  
58-61 x 29-32

ly app. long. broad,

sheathed in 2y app.

< 64 x 8

neck ca 150 long x 150

peritheca ± globose

ca 5-600 diam

antiohemisphaera

cf gryngia-veroshanae

Pod. excentra ✓

P. decipies ✓ 8-sp

Pod. australis ✓

58-70 x 29-30 2y apps < 200

Schizothecium ✓

ridge 30.5-32 x 13-17 globose

Sporozymella ✓ 4ER

64 x 10

tenetispora ✓

Asciobolus ✓

is on 17.11

21 x 9.5

fruit gel  
all round in II

Schizothecium ✓

Johnston

4-sp.

19.5-20 x 11-11.5

16.12

Sch. globose ✓

Pilobolus

Spores

8-9 x 11.5-15.5

ellipsoid,

white yellow/orange or red

crystalline ?

Phanerotheca

Spores 4.1 - 5.1 x 2.5

SLIDE  
~~Phanerotheca~~

✓ Sawtooth  
red.

perithecia 160 diam, black

conical

Lasiosphaeria

setae up to 220.

Sp broad ellipsoid  
18 x 11 ✓ conical?

old - asci not clear

Asciobolus

all round gel. minty verrucose 19.5 - 21 x 9.5

Hawaiiensis ✓

Saccobolus

3+3+2

craggy exoper. rough, cracked

(?)

Small 4.5 x 1.6

Spores 16 x 7

versicolor vs beckii?

Pezizella ✓

entered as

23.12

Pezizella ✓

Sch. glutinosa ✓

R. polytrichum / T. vomeris

2 asc. whole apo Sordaria

Asc. Hawaiiensis ✓

20.5 - 22.5 x 9.5

all round gel

apo small (cf others) ca 250 diam

Large setae ✓ Pezizella

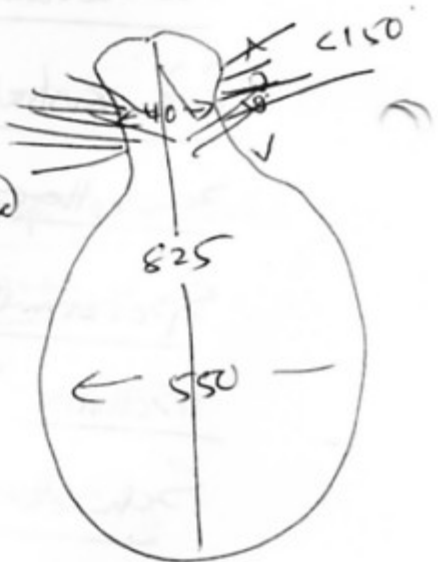
f. sp. sp irregularly fused (ellipsoid)

64 - 74 (95) x 29 - 32

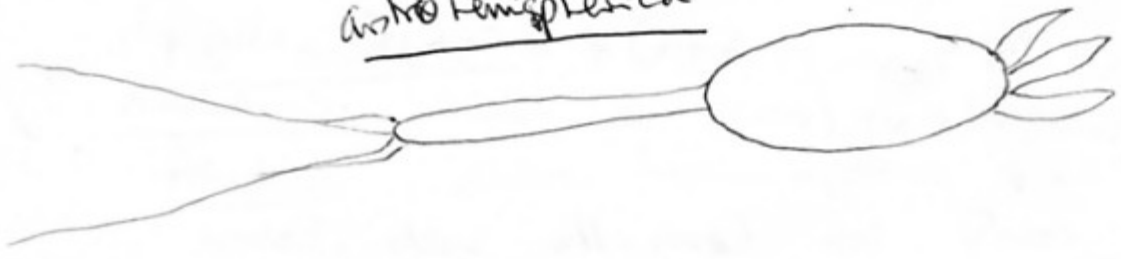
ly app < 80 x 9-10

Secondaries complete - at least

3 seen at apex



Astrohemisphaeria



SLIDE

1mm Amnion S.sp. highly hairy - brown  
fleshy

1mm spores ca 30x16 at neck, with dorsal plaques

1.1.00 Pod. excentrica ✓

Sch. glutinosa ✓

Sp. uer 58-64 x 10 intercedra?

Podospora S.sp. 48-55 x 29-32

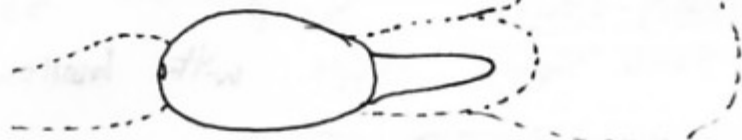
stalk tapering 14 app 19 x 8 at base  
-22

biseriate

black neck, no setae?

(see 7.11?)

apical g.p.



ca 160 x 25

intestinea ✓?

6.1 Stropharia ✓

no ring. gelatinous white

spores ellipsoid - keagool, pink 11-11.5 x 6.5  
-12

l-spores 1 view other view

pale cream wff.

stalk 8cm x 2cm.

Cap



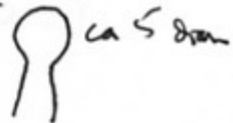
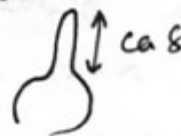
hemispherical 11mm diam

no facial cystidia

Marginal cystidia

no gills white. same ring

lageniform. same capitate



gill edge teeth

PACKET

Amnion

still round

sp 38-42 x 19-20

neck dark  
edged

immature Torchdelitschka sp. ca 26 long.

Sp. 4 ER 24-55 x 10-11 intermedia

Schi. glaberrima ✓ Pod excentrica ✓

13.1 Amnion plentiful, but still immature

12.1 8-sp globose immesed peritheca. Spore red hairs at red, but immature

Amnion head black vertically ridged - no setae

of seg. hairs 8-sp. 38-42 x 20-21  
no shed spore apps with hollow centre? only seen in ascus

Pod. intestinaea ✓

Torchdelitschka Spores r. dark 35-37 x 12-5-13

cf redolentica ? ✓

SLIDE

peritheca ± immersed. Spores basate. ascus with apical ring ca 5 diam



24.1 Amnion Still immature Spores basate

Pod anothemipsterica ✓ immature Phanerozpora minutissima ✓

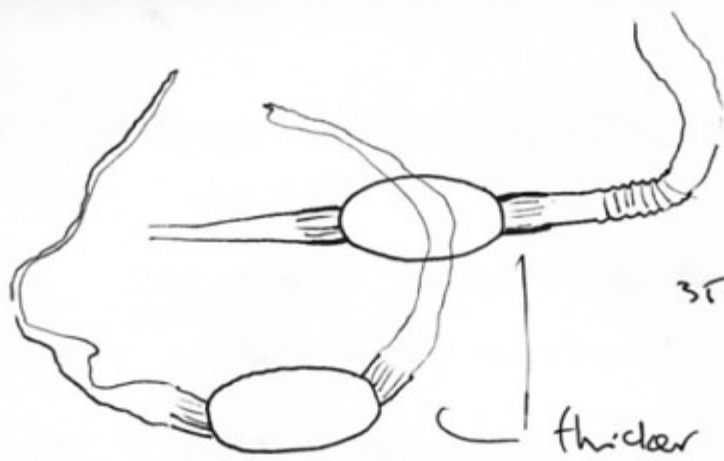
rather perithecan with a few ripe spores - not good views. Appendages both walled + striate

ca 38 x 20  
-35



no ring at ascus apex

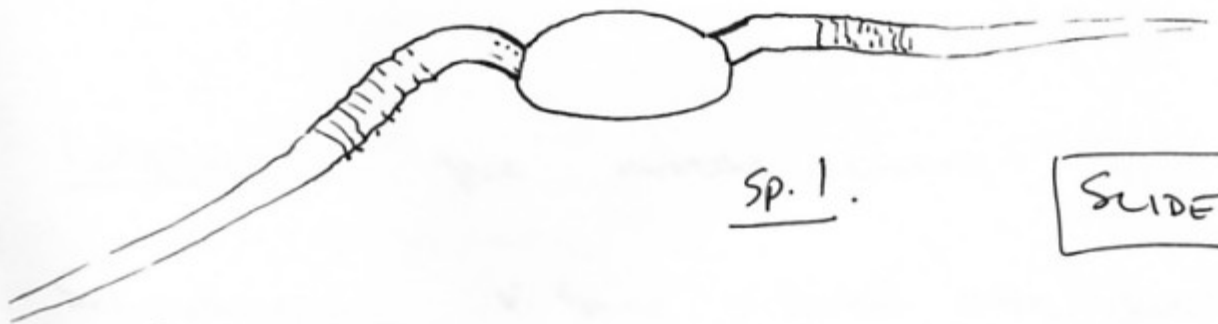
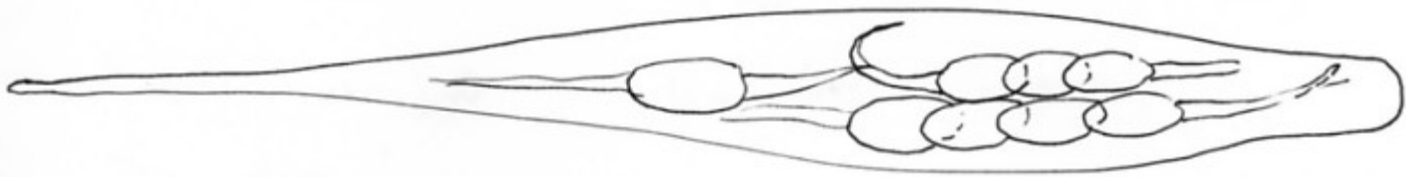
a few or more brown hairs, shorter at head and vertical ridges of thicker/darker cells



35 - 38.5 x 19.5 - 20

thicker persistent region  
10-12 long

Asci 385 x 45 long stalked



Sp. 1.

SLIDE

30.1 Pod. excentrica

ascus ready to pop 200 x 75

Dried 30.1

- Ascobolus hawaiiensis*
- Iodophanus carneus*
- Lasiobolus cuniculi*
- Ryparobius polysporus*
- Saccobolus depauperatus* + *S. beckii*
- Arnium* sp. 1 [s]
- Phomatospora minutissima* [ps]
- Podospora australis*
- Podospora austrohemispherica* [s]
- Podospora decipiens*
- Podospora excentrica*
- Podospora intestinacea*
- Schizothecium glutinans*
- Schizothecium tetrasporum*
- Sporormiella intermedia*
- Sporormiella minima*
- Sporormiella teretispora*
- Trichodelitschia aedelfhica* [s]
- Stropharia* sp. [p]
- Pilobolus crystallinus*