

grey D'Entrecasteaux NP, 34°32'58"S; 115°52'43"E 29.9.99 39/99
kangaroo Pemberton, WA

Inc. 1-11

4-11 Ascobows asci ca 420-550 x 80-85

PACKET

Spores minutely warted - verrucose 38.5-41.5 x 19-19.5
apex st. flattened, due to thicker rim of warts in some

Sp. 2

sect Dasyobows?



gel unen

asci clear brown ink



Lasobows broad ellipsoid, 17.7 x 11.2. Setae < 160

asci ca 125 x 26

unicoli ✓

7-11

Pedospora antraks ✓

Ascobows

43 x 20

Sp. 2

arrangement consistency

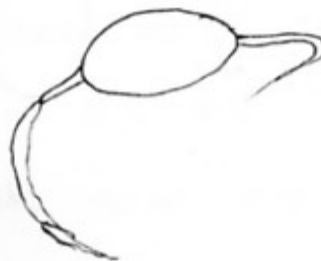
coarser towards apex, to give a knobby truncate
appearance. Asci 750 x 84. Also orn. germling
round & coarser than eleg/hawaii/sicut type, intense purple

Schizothecium st. ridges of inflated cells at neck

spores 32-35 x 19.5-21

(Yapp ca 10 x 2, st. tapered.)

can't see Zyg, but has look of conicum-type.



← only seen in ascus

glutinos ✓

11-11

Small white Copelia ca 200 diam
asci 85 x 22. (6-spored)

ellipsoid hyaline 11.5 x 7

Sexdecemsporus ✓

Schizothecium as above

17.11

P. decipiens ✓ check spine size & no.

S-sp 38-40 x 22.5

Coprinus seedecensporus ✓ 11-13 x 7

Ascomas minutely warty ✓ 21 x 9.5-10.5
-24

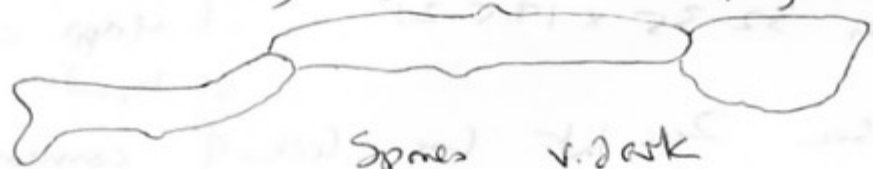
(7)

Coprinus? white, waxy, starchy stipitate, ca 2-300 spores
asc ca 60 x 9-10 Spores ellipsoid, hyaline,
biseriate 6-6.5 x 3 no color change in
KI, but also no reaction of ester
part or operculum/split in empty asci after
some discharge with KI sp. 2

30.11

Coprinus thin, narrow veil and Sphaerocysts

← not as narrow as vermiculifer etc, but not fully inflated. Short peg-like protrusions
- completely smooth



Spores v. dark

cf. filamentifer? ✓



6.5 x 4 x 6

P. decipiens ✓

Schizophoran S-sp uniseriate poor scales

sp 32 x 16

ly app small, thin, ca 10-12 long

st. base flexure lying below. Small

scales base - st tendency to vertical ridges



glutinos ✓

P. australe ✓ 54.5 x 25.7 tremor 2ys

Ascobars albidus type apo. Spores mostly wetted, all round gel 21-19.5 x 9.5

hawaiiensis ✓

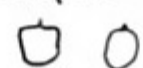
tiny white Coprows ✓ ca 140 diam. Clearly operculate
Asci broad clavate 65 x 25

Sp 11-11.5-12 x 6.5 ellipsoid hyaline
paras straight, hyaline, ^{or v. st.} capitate. < 3
exception of rounded cells up to 10-12 μ m



sp. 1.

8.12

Coprows thin walled narrow hyphal veil
Spores v. dark ellipsoid 6 x 3.5 'Shore' it
Some views:- 

S. filamentifer ✓

Pod. decipiens ✓

Schizothecium ✓ as before, sp. 32 long.
35

Coprows ✓ as above

Conocybe ✓ ad ?

Spores brown ellipsoid 6.5 x 3.2

17.12

Cop. filamentifer 4 sp. facial cystidia present

Spores 6.5 x 4.5 ellipsoid / st. tapered.
oblong

Small apical o.p.

Coprows

Spores hyaline 12.5-13 x 6-6.5 biserial

asci broader near apex ca 80 x 25

paras fine, not capitate 2 sp. 1

Ascobius hawaiiensis ✓

Sch. guthriei ✓

P. decipiens ✓

24.12

White ✓ Coprows 2-300 diam ♂ sp. ellipsoid umbr
asci 85-90 x 22 12.5-13 x 7.5-8

uniseriate, st. capitate pars basinate
excipulum rounded polygonal cells ca 10 diam sp. 1

Ascoborns 21 x 9.5 hammers ✓

Pod. decipies ✓ ♂-sp 41-45 x 23

Sch. initially uniseriate 32-34 x 17.5-18
scales marked, small, not luxuriant glukros ✓

2.1.00

P. decipies ✓ ♂-sp 35-40 x 21-22.5 Sch. glutinos ✓

✓ Podospira brown flexuous hairy below, less so above
(amount variable, some ± 0)

Asci clavate, basinate spores v. broad ellipsoid

ca 250 x 65

spores varying markedly in size

35-45-48 x 29-23 ly 19-22 x 5-6 broad cylindrical

apical g.p.

2ys simple, structureless < 3uolng

sp. 4112

57-61 x 10

intermedia

* another perithecium, possibly different sp ly app similar but
spores less rounded - (note like P. apiculata - st tapered to a tip)
2 apertures same as larger rounded spored version

2 extremes of a

sp. 4

very variable spore size range?

S.1.00

Asc. hawaiiensis ✓

21-22.5 x 10

Pod asperum ✓

Sch. glutinosa ✓

Pod asperum

no setae, flexors brown hairs below neck

biseriate

46-42-38.5 x 22.5-26

ly 16-19 x 5

No s.p. visible

-25

asci ³²⁰⁻ 350 x 65-70 ⁻⁷⁵

± cylindrical - even diam

Sp. 4.

over vol of length.

Spore length v. variable within

2 apperages at il 2.1, with

cross wrinkles } a single pentagon

Armon Pentagon

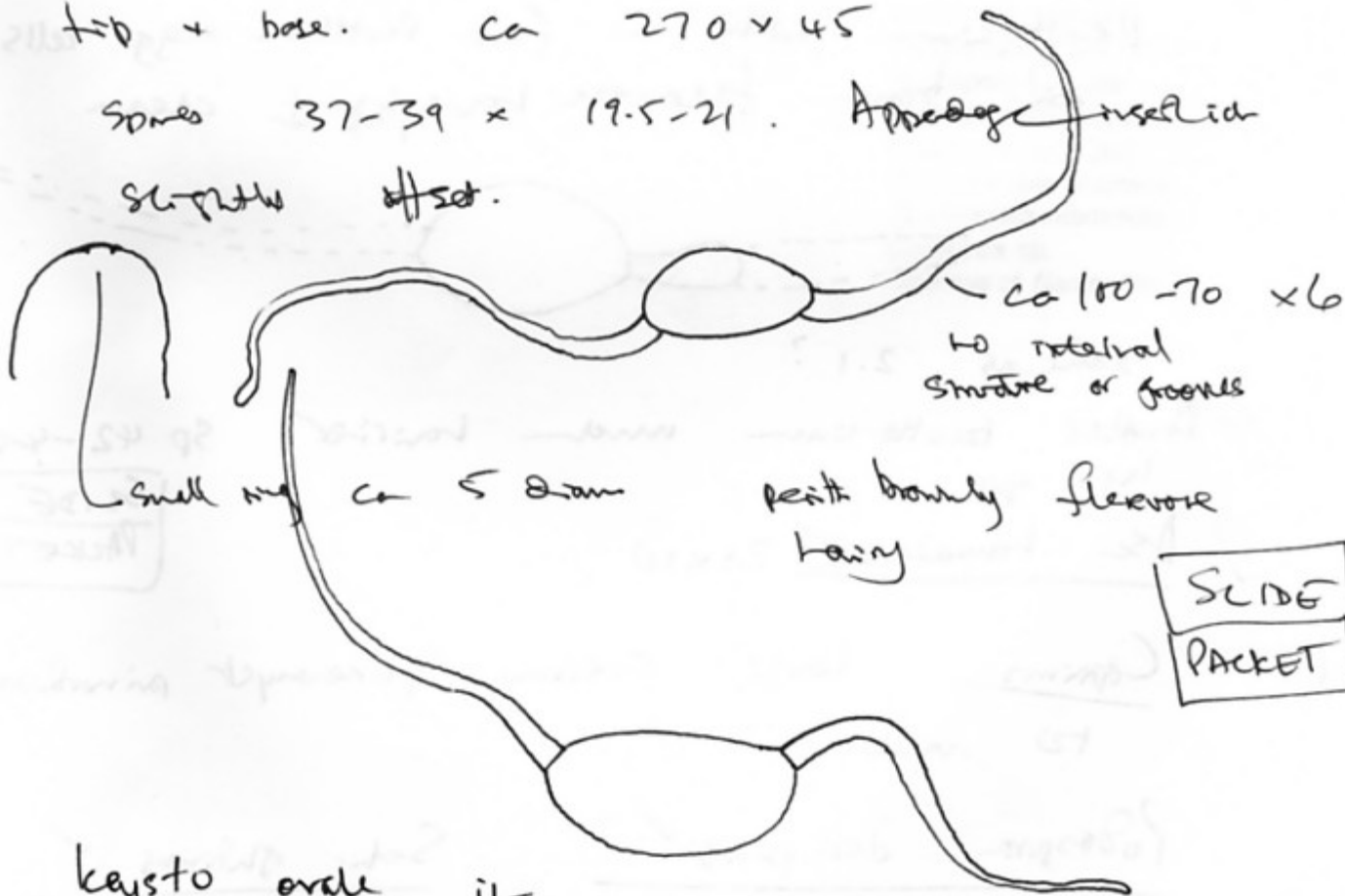
ca 550 diam, semi immersed. no setae

thin web of superficial mycelium under stereo-mic.

Spores biseriate - Apperages clearly visible in ascus

asci ampullate, broadest in middle narrower at top + base. ca 270 x 45

Spores 37-39 x 19.5-21. Apperage inserted slightly offset.



SLIDE
PACKET

keysto ovale il

Krug + Cain 1972, but

I do not have a

description

131 ✓ Sch. glutinosus 32-38 x 16-19

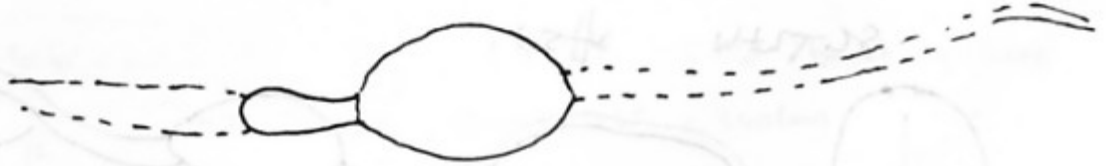
Podospira f. spaced, but same size

maturation within ascus very variable
32-38 x 19-25 large stat 14 app
20-25 x 5,
apical slightly affected slightly broader at top
g.p. to 7

long, simple 2y apertures - clearly visible
in swollen ascus. ca 130 long x 5-6 at
base - not obviously swelling in H₂O

Spores discrete - asc. very blunt, up to 65 wide
before expansion or maturity

Perithecia with a few swollen egg cells
& brown filamentous hairs, but ± clean



Same as 2.1?

Another perithecia much hairier Sp 42-45 x 27
14 app.

✓ Asc. lamellosus 21 x 10

SLIDE
PACKET?

19.1 Coprinus large creamy Sphaerocyst primordium
to mature.

Podospira decipiens ✓

Sch. glutinosus ✓

74.1

Coprinus

spores

from

large creamy

Sphaerocyst
dark

paracodium (?) oblong-ellipsoid, very
6-6.5 x 3.5

missed fruiting - spike left
no similar paracodium.

8 cm long
unresolved

Sch. glutinosus ✓

Cap of filamentifer
also present.

Dried 74.1

- Ascobolus hawaiiensis*
- Ascobolus* sp. 2 [p]
- Coprotus sexdecemsporus*
- Coprotus* sp. 1
- Coprotus* sp. 2
- Lasiobolus cuniculi*
- Arnim ovale?* [sp]
- Podospora australis*
- Podospora decipiens*
- Podospora* sp. 4 [sp]
- Schizothecium glutinosus*
- Sporormiella intermedia*
- Conocybe* sp.
- Coprinus* cf. *filamentifer*