

Horse Maentweg 8.8.99 SH 675409 28/99

10.8

Pilobolus Large orange very round oval.  
14.5 x 11.5 cf Sphaerosporus ?

Sordaria Long ellipsoid 19.5-21 x 9.5-11.5  
v. good set. limicola ✓

Thelobolus rows, ✓

Lasrobotrys Asci 75-210 x 45-47

Spores ellipsoid ~~12.5~~ 22.5 x 12.5-13

Setae Sparse short, < 200 x 16 at base

17.8

L. coniculi ✓ Sord. limicola ✓ T. ramosus ✓  
coniculi ✓ but large asci!

Saccobolus 4 x 2 sp. white/hyaline; curved pass.

Sm 30-31 x 11-12

Spores smooth - min  
reticulate

Asci 80 x 19

ca 12 x 5.5-6

fits depauperatus immersus ?  
gasc better

Van Bronckelaer to 4 x 2 (Group 1) pattern  
slows a tendency

14.8

T. ramosus ✓ Sord. limicola ✓ (imm) Sch. conicum ✓

Sacc. depauperatus 3+3+2 ok.

Ascobolus immersus ✓

Saccobolus 3+3+2 Spore mass laqueatus 38 x 16. Spores

grey purple spores 16 x 6 asci 60 x 22.

v. small apothecia versicolor ✓

15.8

Sordaria fumicola

Sch. vestitula imm?

Ascob. immersus

Thel. vauvri

Podospira decipiens

Sarc. versicolor

Cap. Setulosus imm.

24.8

P. decipiens

Sarcobolus depauperatus

Cap. lanatum Spores 8-10 x 5-6  
pseudocylindricus

Sporosiumella 4T 10 x 8 lageniformis

29.8

Cap. uniser immature

Cap. pellucida

P. decipiens Sch. vestitula Cap. coetiporus

check S. corium?

4.9

Cap. coetiporus

Cap. uniser

Cap. pellucida

Cap. strobiliferus

P. decipiens

Sch. fumicola

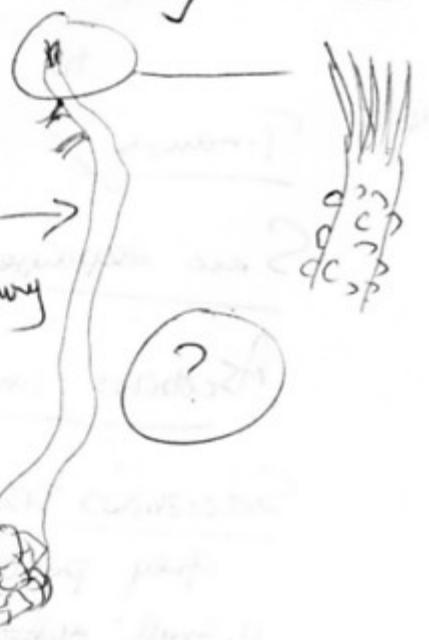
black head, rugose, irregular neck with lateral openings as well as terminal.

Spores? 1 septate, asymmetric, ca 500 long



32-29 x 16

hyaline multiseptate contents



10.9

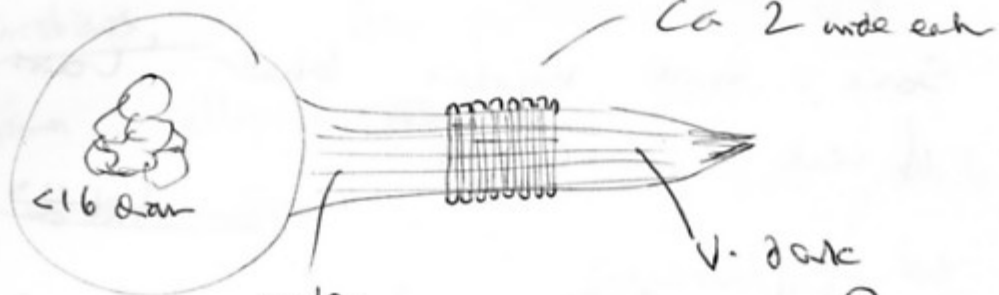
Cap cordisporus  
Cap. Schlosser

P. decipax

Saccobolus depauperatus

Phycosporium (Pyx) (Aerial body ca 110 diam.

neck darker above, rugose corrugated 110 long  
x  
18 diam



(No spores seen)

badriostoma?  
checked against Lindauit 1980 ✓

Other find. Spores a septate 42-35 x 3.8, with  
(inc) long thin tail

15.9

Cap cordisporus

Cap pellicularis

P. decipax

Sporobolus

UT straight SA

40 x 8

Loganiformis

Pyx. badriostoma

[also the with ostiolate, beaded  
black pyrenoid(?) spores]

21.9

Cap stercorarius ✓

Cap miser ✓

Capitulum - Mis like zone near base of  
stem. Also like C. cordisporus

4 spores facial cystidia char of epithemoides ✓

Spores small 6.5 x 6.5 x 4



Schizotheca

Spores

22-23 x 12.5-13  
apical gp 2 app. sample

32 Spred

asci

ca

220 x 38

pronounced but small scales

14 app?

or is it Arrium?

= dakotense

6 long x 1-1.5

P4 x. bederostis

✓

weeks

110-150

long

Heard body

50-100 diam.

cells < 16 diam

Some small mycelia blunt 'hairs' at base

if week < 16 x 4

~~dakota~~

312

Still

quite var.,

lot

of dead perithecia

~~Sp. bederostis 4-6-12~~

Sp. 4T

legioniformis

✓

'Eleutheromyces'

✓

Discarded - poor culture 3.12