

Roe Deer Chestnut Wood, Le Farquet 23/99
 46300 Gorder Fr. Coll P. Care 4.8.99

inc. 9.8

300 u

- 10.8
- 12.8
- 14.8
- 20.8

1 mm P. decipiens? probably not —
 another one with Spiky setae & Spored
 still immature. Dark papillate cells + neck,
 body translucent. Setae < 200, fused but
 not swollen - agg.

Spores: immature 4.8 x 2.6 No 14 app
 24 apps firm, striate

Arrium check when mature - ~~hatched/ariz~~
 OK for arzenense

P. lobos pale 5-10 x 5-6 crystalline ✓

24.8 Pod decipiens ✓ S.sp. 35.5 x 21

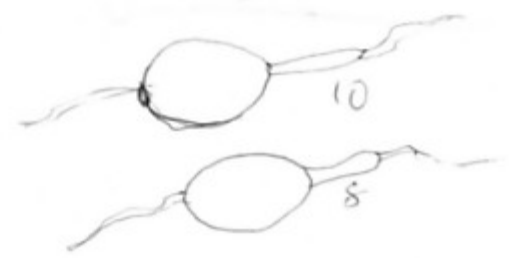
Lodophanes caspers ✓ KI F 19-20 x 12-12.5

Setae polysperid Prospira asymmetric single setae,
 fixed at base
 16-17.5 x 9.5-10

Asci 300 x 55-60 clavate ca 128?



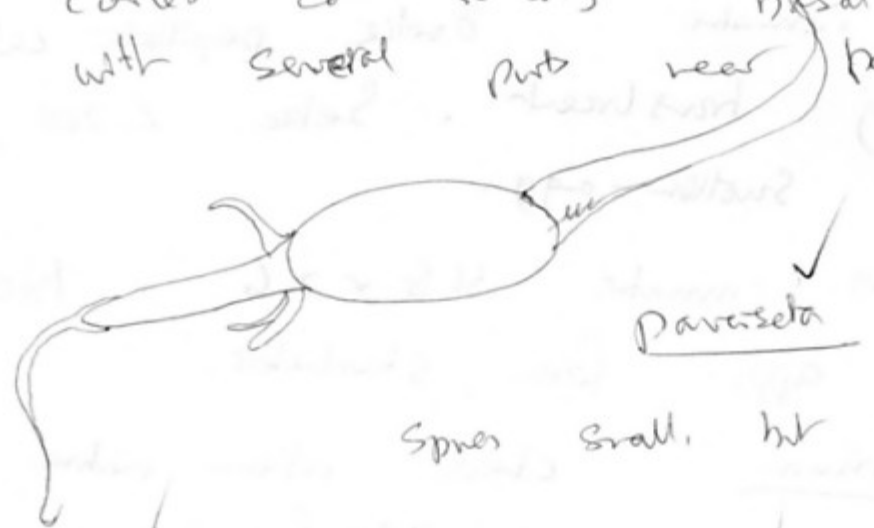
immature spores
Setose / Infra



4 -spined Podospira with few sparse bristles
 Setae or neck & other "plaque"
 of deepies

Spines 32-35 x 16-16.5

14 app clear, tapered 19-20 x 5
 apical 24 app firm, eccentrically inserted
 curled ca 20 long.
 with several parts near basal finet +
 base of 14?



Spines small, but nest ok

29.8

Leophanes / carriers

Pod. dejectae

Saccobius spine nose
 3+3+2

Smooth 35.3 x 13
 ↓ dejectae

Pod pleiospra ✓ 16-sp 30-32 x 16

4-spined Setae Podospira 32-35 x 16

4.9 Sch. vestigiosa

Pod. paraseta ✓ Paraseta

Pod. dejectae ✓ 8-sp

Pod pleiospra

not reported to Brown cave

10.9 Coprinus lanobli 11 x 6 / red oak *

P. decipiens ✓ P. parvireta ✓ Sch. vestigiosa ✓

Lodophanes costerae

Yellow Saccobites Sm 48-51 x 14.5-16.

spores almost smooth - minutely verrucose

89-20 x 9 truncate 4 x 2 Citrius *

paras green/yellow

15/9 P. decipiens ✓ Sch. vestigiosa ✓ Lodo. costerae ✓

21/9 Sch. vestigiosa ✓ Sacc. citrius ✓ P. decipiens ✓

Sch. 26 x 13 good scales f-sp. Conium *

P. parvireta ✓

recalled, but kept until return in Nov

3.12 Phenakosporia ellipsoid hyaline spores 5 x 3

becomes oblong

uniseriate

asci

minutissima ✓ ✓ (ADD)

65 x 3.5-4

Saccobites Citrius ✓

Lodophanes costerae ✓

Sch. vestigiosa ✓

Sch. conicum ✓

Coprinus lanobli

11.2 - 12.8 x 6.5 - 7.5

red oak ✓

asymmetrically setae Podopara. 4 spines

Asci a. 210×30 Spores 32×17

Parasol ✓

Also some (1) 2-spined perithecia

Asci 175×29

all asci. no
aborted spores

Spores $32-35 \times 16-17$

Setae very few.

~~leaf with water from Art~~

~~nothing~~

Nothing new.
c. 1.00

8

87A