

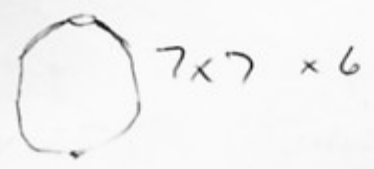
12/9 ? Schizoc \circ glabra Coprinus v. long excentric g.p. ellipsoid 10x4.8
~~9.84~~

✓ Ascobolus imarius 8. spored 5.8 x 3.5
 (some 7-spored)

✓ Podospora decipiens (immature) - 38.5 x 19.5 - 21

✓ Sporormiella 4 ER 37 x 5.5 arshalis

13/9 ✓ Coprinus miser



16/9 ✓ Saccobolus 3+3+2 Spore mass 35 x 12.5 Asci 8 x 22.5
 mycelia violaceous - 37

Spore 15 x 6.5 - 7 Smooth uncracked depanperatus

✓ Sporormiella halvigi 4 ER 37-35 x 6.5
 asci short stalked expanded 130 x 16
 unexpanded ca 65 long? arshalis?

✓ Leobolus curvatus Asci 177 x 41 Spore 22.5 x 12.5
 OK

✓ Podophorus cornutus 22.5 x 12.8

✓ Schizothecium Spores 22.5 - 24 x 2.5 - 13 8. spored
 ly app 10x3 single/small discrete
 clear egg hairs hispidulum

19/9 ~~Schizothecium~~ Sporormiella halvigi 38.5 x 6.5 4 ER
arshalis?

Pod'schiz Spores any bean shaped 35 - 38 x 19 - 19.5

brad ly appedge, no zys visible PTD

(15)

Suggestion of this month?

2ys only in II



Some

Podospira

Spore, straight non infested eggs last
biseriate ♂ spread

excentrica

Saccobius

2+3+2

35 x 12.5

depauperatus

Smooth

20/9 (4)

Trichodeltische bespanta
brown fecund larvae below

27.3 x 9.

Setae < 165



25/9 (1)

T. curvius

excentrica

41.5 x 19

? Sparanidula

38.5 x 7

long UER
australis

Schizotetra

♂-spore

Simple

eggs

27-27.5 x 16.
concolor

P. decipies

♂ spread

35.3 x 19.3

Cephus

Small larvae

immature spores ca 6.5
flattened ~ broad ellipsoid?

26/9 (2)

lots of Trichodeltische

2019

3.7.9

P. decipiens

P. excentrica

Sporomilla heling - uen 41.7 mg

4/10 C. miser

P. decipiens

Sporomilla

heling 32 - 41 x 6.5

Sporomilla

fapeng

33.7 - 36.9 x 6.5

laganiformis

Lasiodora

1 dried 4.10

Cow

Cercophora coprophila

SE 662377

9.10

hany pestle on - immature

P. excentrica

P. decipiens

T. bispinosa

Comochorea

12.5 x 9.6 x 6.5

Lymantra

Seke 10 to 20

13/10

Spiky

Prospira

Arctium

Asens apex very broad & rounded 25 dia x 90

E. spines 22.5
Spines 21-19.5 x 11-13

lans brown n. sp. 100 (150)

apertures 2 sp. 1 apert g.p.

Prospira by apertures small ca 5 x 2

very difficult to decide what by apertures
but spines definitely denote the young
∴ by app. ∴ Prospira

Pellissiana - spines a little small
~~Altere etc?~~

* S. pilosa - asens slope much more
like it, + spine size

with imbricata a few ordinary
agglutinated lans present.

OK - for pilosa - spines (asci, size + slope)

15.10 T. bispinosa

P. eximiosa

S. pilosa

Dried 16/10