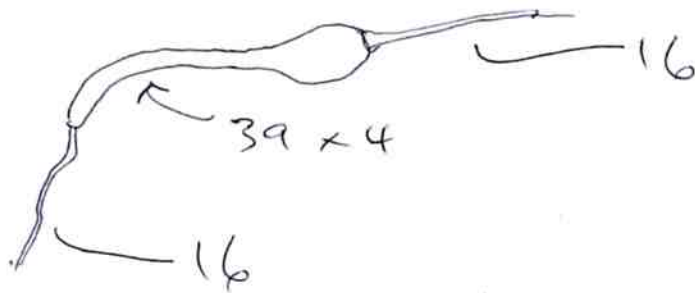


2018 Coprinus pruvoti ~~leptocarpus / Cordispora?~~ ✓ X

Polygona Selae Podospira - Selae not aggregated
immature.

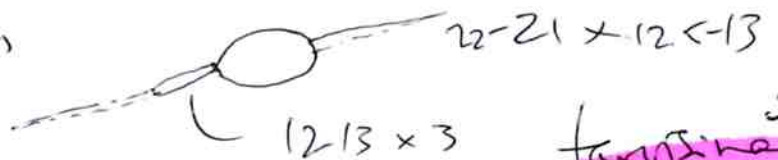
Sporocarpium 4T sp 45 x 12.5-13
-50
width asc 160 x 22 Grandispora X

Cerophora asc with apical globe



Silvatica X

Selae polygona Podospira selae not aggregated
350-400. spores



farnisina X

Armenia imm. sp 42 x 22 appages 55-60 x 9 at base
symmetrical.

perithecium no appages

mendes X

Saccobolus sm 3+3+2 41-47 x 16.
spores rough - coarsely walled

beckii X

Schizotheca 4-spored 19-20 x 10

tetraspora X

inc 22.8 - 15.9

Cap. ~~cardispora~~^{OK} prim x

P. ~~torvisina~~ ✓

Sch. ~~restriata~~ x

P. ~~adspora~~ ~~decipiens~~ x

22.9. Cap. ~~miser~~ x

discarded at end of workshop