


10.4 - 12.4 -

16.4 Ascobolus apterous & cord 400-1100 diam  
 not fulcrans

 sp. 17.5-19.5 x 9.5  
 -20

Asci 210-225 x 22-24

abidos? ✓

Abundant immature

Ascobolus immersus ✓

22.4 A. immersus ✓

4 + 8-sp.

A. abidos ✓

2.5 Asc. immersus ✓

P. decipiens ✓ 8-sp

P. xidophora

leuc 160, overall 225 (body 65 diam)

Spores ca 48 long (not easily seen separately)

 48-52 x 4-4.5

patchii? ✓

Coprus

thin veil?

sp. ellipsoid

8 x 4

5.5 Coprus miser ✓

Asc. immersus ✓

vermiculifer (see 14.1)

P. x. patchii (H)

abundant white mycelium - not clamped

P. decipiens ✓

Small

800

Ascobolus



sp. 16 x 9

Sch. conicum ✓

8-sp

27-28 x 14

small clear scale

White Coprus

basinate



Asci 45-50 x 19-20  
 pairs cylindrical 2 mid

Denticula

serotinosus perider

Spores small,

dentic. ellipsoid. Uniseriate.

Asc 190-200 x 13,

long chalcid - spores crowded in

apical part

(170)

ellipsoid 13-14 x 7-7.5 No appressed. Apical g.p.

p.s. of ascs 80-95 Finetaniella? microspasma  
14.5 Xylospheera strauera

Coprinus white thin hyphal veil, glaucous  
perithecia. Spores ellipsoid 8 x 4 vermiculifer

Finetaniella ✓ perithecia immersed with white mycelial  
covering and pedic. Sp 12.5-13 x 8  
ascs p.s. 90-95 long. uniseriate. (S)  
F. microspasma

Podospora decipies ✓ asc. immersed

Coprinus sexdecimsporus ✓ ascs 12.5 x 2.6

16-spores 13 x 8

18.5 Coprinus uniser ✓ Cop. ~~filamentifer~~ <sup>vermiculifer</sup> ✓


P. decipies ✓ Cop. sexdecimsporus ✓ ascs 10.3 x 2.6

25.5 Finetaniella microspasma (S + H) P. decipies ✓

Cop. sexdecimsporus ✓ plethorh - very small  
white apothecia < 200 diam

1.6 Cop. vermiculifer ✓ Brown Peziza perithecia

Cop. strobilifer perithecia - no spores - 2.6. ringed,  
Spores

P. decipies ✓  8 x 7 x 5  
ephemeroides ✓

8.6 Coprinus A - white, cf C. cordisporus but with ring

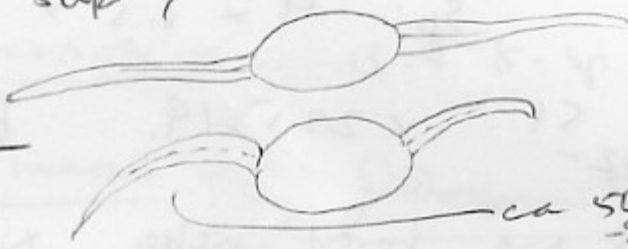
eplomeroides

Peziza spurs minute, asci 290 x 16-17

mass dense, hyaline, not capitate or pyramidal.  
4-5 diam in each spur smooth 19-20 x 8

Asplenium 6cm diam x 10 mm tall  
pale 'strip', excipulum brown granular fibrillar.

Ascom



sp 30-31 x 18.5 - 32

black rounded used asci, expanded below no or v. faint apical ring.

no setae, hairs or tomentum, just 2nd row web cells.  
Lundqvist's n.sp. p.229?

Cop. Serdecium spurs ✓ Sch. conicum ✓

12.6 Peziza Asci 340-400 x 18-21

spores smooth ellipsoid 21-22.5 x 11-11.5-12

vesiculose ✓ (H)

Pod. degeeri ✓ 8-sp.

Ascom ✓ imm as 8.6.

St. Setae around ostiole biserial

Podospora 8-sp biserial sp 57-65 x 31-32



pedicel 19-26 x 9-11 at base tapered to blunt-angled apex

extensive but very faint 24 pedog. Asci with PTD  
no apical ring

24 eggs not slawly up any better with  
 Indian ink (- new not as good as the old one  
 Waddell + Newton C 02992  
 C 02754 } Intestivacea

Low activity - Sprayed.

28.6 P. intestivacea (H) Comochabz leucopaca

Sp 9 x 6.5 x 5.5.

Armin Sp. 51 v. 22.5-19. b. serrate.  
 42-

Low activity, spread very hardy visible. No larvae? sp. Pseudolamabz

77 Cop. ephemerades ✓ Cop. lamabz prindini ✓

P. intestivacea (H) Cop. leucopaca P. decipiens ✓

12.7 → Sp. 8-9.5 x 5.5-6 = Pseudolamabz <sup>med. r. h. s.</sup>

14.7 P. intestivacea,

Dosed 14.7 with  
P. intestivacea +  
Armin