

Horse. Montaspro, Route SP54, Madonie Mountains, Sicily, 07/05  
 Italy. 800 m. 8.4.05 . N37.91; E13.98.

10.4 - 12.4 - ✓

16.4 Ascolomas immersus ♂-sp 51-64 x 35

Sp. 4 ER 48.5 x 10

intermedia ✓

22.4 A. immersus ✓

Oedocephalus (H)

2.5 Coprinus unise. ✓

Glaucous

Coprinus with

thin veil

primitiva

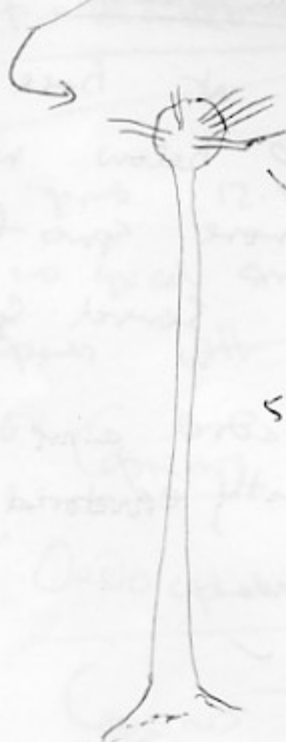
Schizotecon

conicum ✓

f. sp

good scale

25-26 x 14-14.5



Spores Spherical (H)

7-9.5 diam

500-600 high x 30 at base

10-12 at apex,

head 25 diam.

radial lines ca 30 x 5

Sp. 4 ER

57 x 9-10

intermedia ✓

7.5 Coprinus sp.

ellipsoid

9.5 x 5-5.5

veil

non-intersected

verruculifer ✓

(H)

Pedicularis decipiens ✓ f.sp 38.5 - 41.5 x 20-21

Sp. intermedia ✓ Sch. conium ✓


14.5 Cap. vermiformis ✓ Cap. unise ✓ Sch. conium ✓

P. decipiens ✓ Sp. intermedia ✓

19.5 Cap. vermiformis ✓ Sch. conium ✓ P. decipiens ✓

Schizotheca vestricata ✓ f. unise spang 17.5-18 x 9.5

poor scales

Sp. 4 ER sp 42 x 8 

abstracts

"Oedocepalum" ✓ 560 high x 30 at base + 10 below vesicle

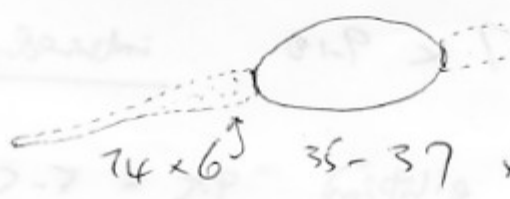
Lead of spores 110-120 diam, and more space than radiating arms, so each unit produce several spores  
sp. 9.5-11 thick walled tube

 radial arms mostly everted?

24.5 Cap. vermiformis ✓ P. decipiens ✓

lanceolate f-spored Arion ✓ . Unelated spore

Symmetrical

 74 x 6 35-37 x 20-22  
asex spore with small ring blunt

Asci 240 x 32

perithecia lightly hairy or pedicel  
menax ✓

Ped aspora Pemphospila sp. 22.5-29 x 13-16  
 asc with 8 asc. check for name



— of P. argenti-veris ✓  
 spaces are too small?

Pentecium pyriform, with typical papillae, 800 x 420

1.6 Lycopodium? ✓ shiny black outside surrounded by white  
 very clear ring. 1 um thick spores 25 x 10-13  
 base bright blue in KI 16 x 9-10  
 basal cell just visible



Trinidacella Annim verda ✓ Sp. interrede

Spores 12.5-13 x 8 asc  
 no spical structure, KI -ve, 140 x 12-13  
 Spores with gelatinous sheath



microspore ✓

7.6 Coprinus miser ✓ Annim verda ✓

Oedocetium ? ✓ P. decipiens ✓

12.6 Coprinus miser ✓ Cop. vermiformis ✓

Coprinus white discoid ca 0.8 mm diam.

8 sp, ascette  
 sp. 6-6.5 x 3 / pass circinate + st. capitate



Cop. seedling spores asc 110-115 x 25

P. kühni ✓ 32 x 19 Sch. vestigata ✓ Annim verda ✓

27-6 Leptotheca Small, simple setae  
 = Sporomucella setae pale towards tip.  $< 65 \times 3$   
 Septate st. geminate at septa, look like condrophores of  
 Xylaria/Hypoxyla etc. spores deeply septate  $54.5 - 58 \times 13 - 14$   
 spore just like 'Sp 4T' below



cf hololaxia?

Arnim madax ✓

[ No - spores too small  
 See 7.7 ]

Sp 4T  $54.5 - 64 \times 11.2 - 12.8$  apical cells  
 tapered, of slit almost parallel in end cells to  
 distinctly divergent in intercalary cells.  
 Deeply cash-ated at tip



Gracispora

See above

Comochaca short setae at neck  $< 50 \mu m$   
 asci  $90 - 100 \times 8$  spores ellipsoid  $9.5 \times 6.5 \times 5$   
Leucoplaca

7.7 A. madax ✓ Coprius See decim spores ✓

Coprius cardisporus

Setae Sporomucella 4T spores deeply septate  
 Neck only setae .T  $54.5 \times 12.8$   
 $56 \times 11.2$   
 pseudosetae immersed except for  $61 \times 12.8$   
 $58 \times 13.5$   
 neck + upper portion. NR particularly  $59 \times 12.8$   
 heavy, except at neck also distinctly  $59 \times 12.8$   
 short setae Pilosa

15.7 Coprinus cordisporus ✓

4 - spored,

Saccid cystidia



< 13 at top

< 20 at base

21.7 Cop. cordisporus ✓

Large perithecia.

32-33 x 19-20

-34  
-35

Ascom

biseriate 8-sp

incompleta



no setae - papillate

Cephalothecoid ridges/places of neck

Same texture hairy, others not.



medex ✓

Draco 21.7 with Ascom