

5.10 Coprinus mEE ✓  
Schizo tetrasporium 19-17 x 8 ✓  
Sarcobolus 3+3+2 rock. 42-45 long sm ✓  
versicolor ✓  
Piptocaptaks r Pilare coming & P. lobowe  
 ket

8.10 Piptocaptaks met. brown, rhizoids large head ✓  
 head cell repans ✓  
Podophanus canorus ✓

Laszobolus sp. 22.5 x 12.8 ellipsoid ✓  
 Setae up to 320 curvicolli ✓ asci up to 40  
 OK diam

Protopia decipiens ✓ Schiz tetrasporium

Vicinatella fumida ✓

12.10 Polygona Setae Protopia ascus 350 x 155 ✓  
 Spores 14.5 x 9.5-11 ✓ Simple app. 128-250 spores  
 -16 ✓ curvicolli

Schiz tetrasporium  
Schizo  
 Another polygona. No setae, aggregated (smaller) cells ✓  
 at neck. Spores 22.5 x 12.5 ✓ Simple apps  
 32(?) spores Asci 225 x 40 ✓ dakotensis

Pilobius crystallinus

16.10

Sch. vestitoria

P. crystallinus

Sacc. versicolor

Pod. decipiens

Volutella cylindrica

spms 4 x 2

curved setae to 400

19.10

Coprinus miser

Pod. decipiens

Volutella

Sacc. versicolor

Schiz. canneri ?

check size

Pod. Scales

Pod. vestitoria

Pil. crystallinus

21.10

Cop. stercoreus

Cop. miser

Podopanus canneri

Sch. lekanorum

Podopanus

setae - simple

polymerized - Spms 19.5-22.5 + 12.5-11.5-14

Setae up to 80 long, non indented or  
agglutinated have the 64. stout stout

In app



12-13 x 6.

terrestris

Sch. canneri

27-45 x 12.5-13.

8-5p

Sacc. versicolor

P. decipiens



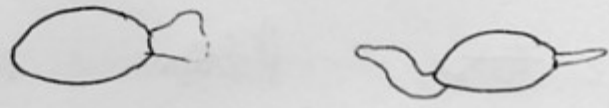
could possibly be bifida (see Wainwright 183)

Spms + by appedage shape good, but

2nd appedage not clearly bifid, but in number of  
insertia (check earlier ideas of terrestris?)

25.10 l. canyans Cap. stereos V. f. m. m. m.  
Cap. uniser P. crystallinus Sch. tetrapinn

Polyspined, Sparsely, Simply Setae Podopara. Wirtzella  
 ASWS 240 x 120 Spines 16-18 x 9.5  
 Small partly visible 14 app ca 6x2.  
 Simple rudimentary 24 apps in H2O.



Pod decipies

29.10 Cap. uniser Cap. stereos l. canyans

Schizo 8 sp. 17-16 x 11 vesticosa ± no scales

Sporomella contracta Pod. decipies

Polyspined Setae Podopara sp. 19.3-20.9 x 12.5-13  
 Setae combining not base spatulate 14 app  
 bifida not really compound.

3.11 Cap. stere. l. canyans V. f. m. m. m. P. decipies

Podopara polyspined Setae, some aggregated at base  
 Spines 22.5-25.7 x 13-14 14 app 9-13, broad  
 24 apps difficult to see - simple or x5-6.  
 short bifid? St. spatulate.

Sporomella 4 Tapered. 51-55 x 11-11.5 g. slit linear, not  
~~24 app~~ Podopara Stig.

7.11 Cop star 1. canyus Sch. vestigian ---

Podopora leura 22 x 14.5 stat stat 14 app  
as on 3.11

12.11 Sch. tetrapora

Podopora 19.5 x 12.8 as above  
leura not aggregated

All these Podopora presumably the  
Same sp. ? - but two distinct  
sp sizes :-

Small = *annulata*

Large = *tenuis* / *hifera* ?

Dated 12.11.